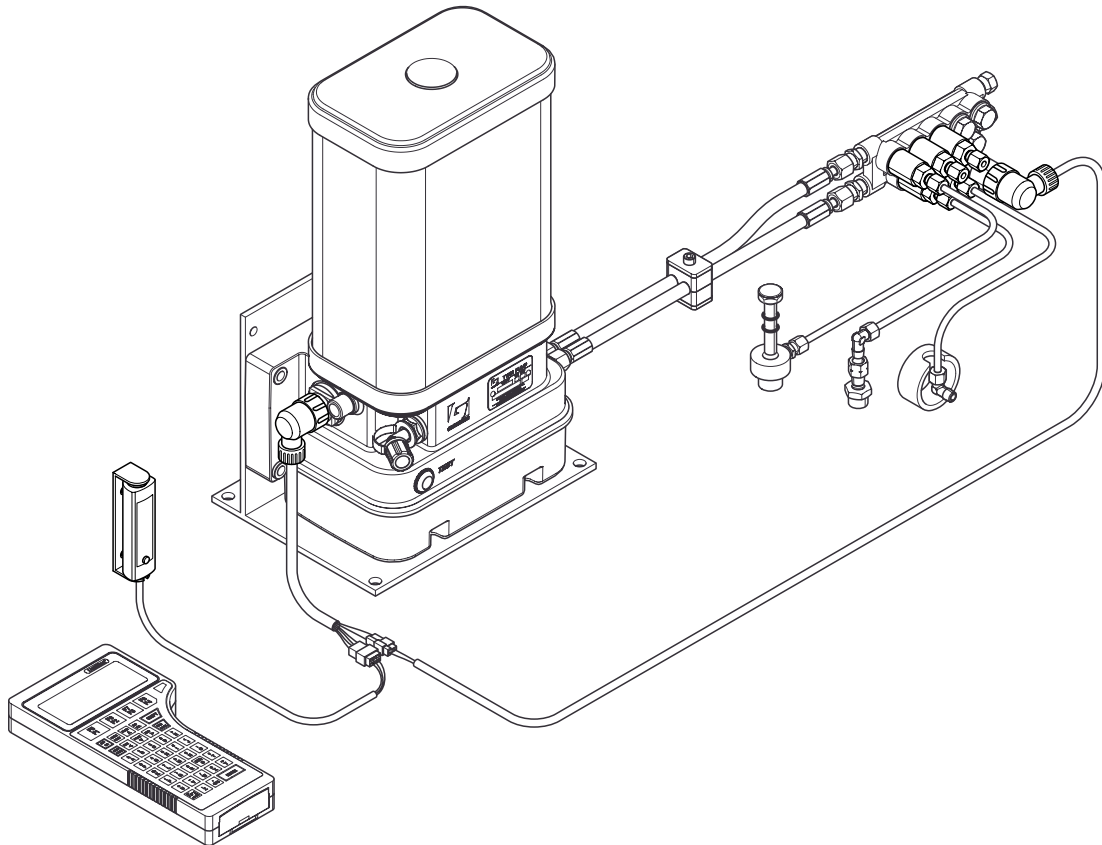


Parts Manual



Automatic Twin Greasing System

D000142R13



YOUR EFFICIENCY IS OUR CHALLENGE

All rights reserved. No part of this manual may be copied and/or published by means of printing, photocopying, microfilm or by any other means without prior written permission from Groeneveld. This applies also to the drawings and diagrams appended.

Groeneveld reserves the right to change parts at any time, without prior or direct notice to the customer. The contents of this manual may also be changed without prior notice.

This manual applies to the standard version of the product. Groeneveld cannot accept liability for any damage arising from the use of specifications other than that supplied.

You are requested to contact Groeneveld technical service for information concerning adjustment, maintenance work or repairs that is not described in this manual.

Whilst this manual has been prepared with the greatest possible care Groeneveld cannot accept responsibility for any errors of the consequences of such errors.

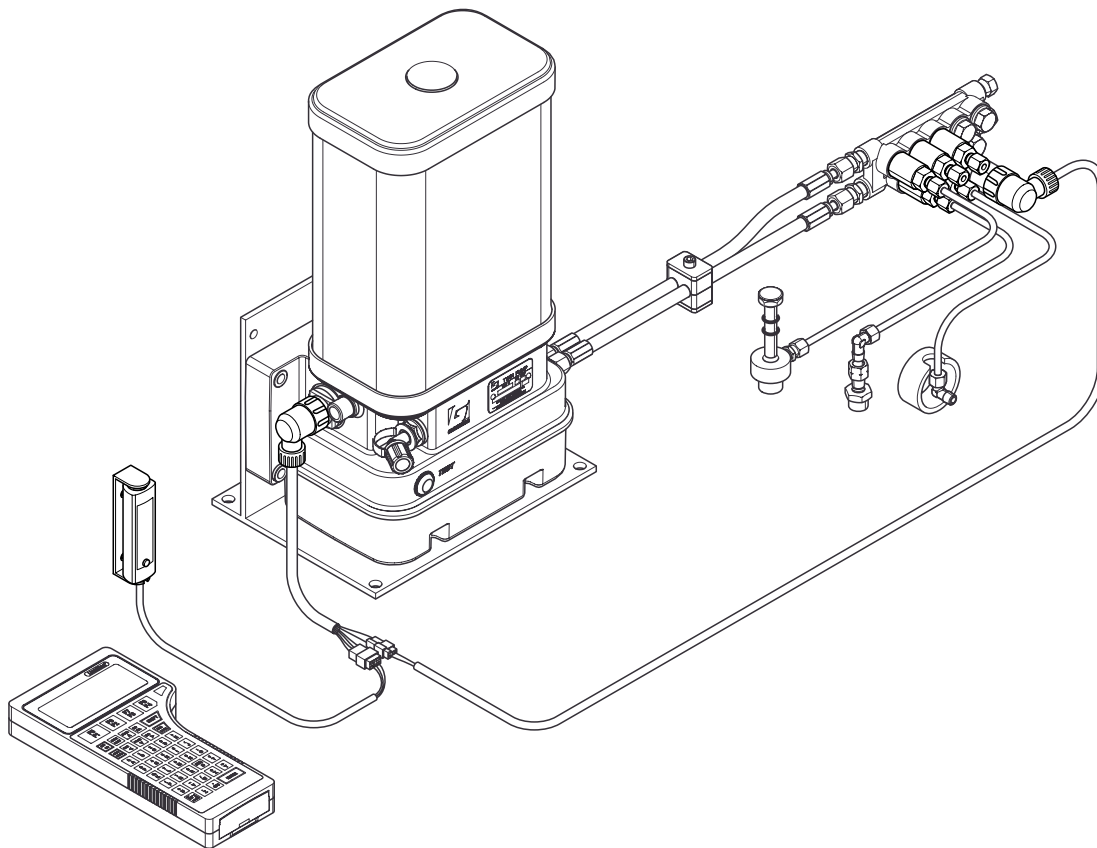
TABLE OF CONTENTS

1. PUMPS	5
1.1 Twin-3 pumps 3 - 4 liters	7
1.2 Twin-3 pumps 8 liters	9
1.3 Optional parts	10
1.4 Timer repair kit Twin-2 -> Twin-3	11
1.5 Twin-3 refillable barrel pumps 20 liters	13
1.6 Twin-3 refillable barrel pumps 40 liters	15
1.7 Twin barrel pumps 18 - 200 liters	17
1.8 Twin-3 device 24 Vdc	19
1.9 Twin-3 device installation kit	21
1.10 Twin-2 pumps 3 - 4 liters (expired, replaced by Twin-3)	23
1.11 Twin-2 pumps 6 - 8 liters (expired, replaced by Twin-3)	25
2. ELECTRICAL PARTS	27
2.1 Electrical parts Twin 2 & 3	29
3. DISTRIBUTION BLOCKS	31
3.1 Industrial distribution blocks	33
3.2 Transport distribution blocks	35
3.3 Welding plates for industrial distribution blocks	36
3.4 Special brackets	37
3.5 Shutt-of plugs & reduction adapters	37
3.6 Metering units for ø3/16" tubes	38
3.7 Metering units for ø6mm tubes	39
3.8 Metering units for ø1/8"NPT	40
3.9 Pressure switches	41
3.10 Pressure switch block	42
4. DIAGNOSTIC TOOLS	43
4.1 UniGINA kit	45
4.2 Twin PC-GINA kit	47
5. INDEX	48

Automatic Twin Greasing System

Release date: December 2015

1. PUMPS

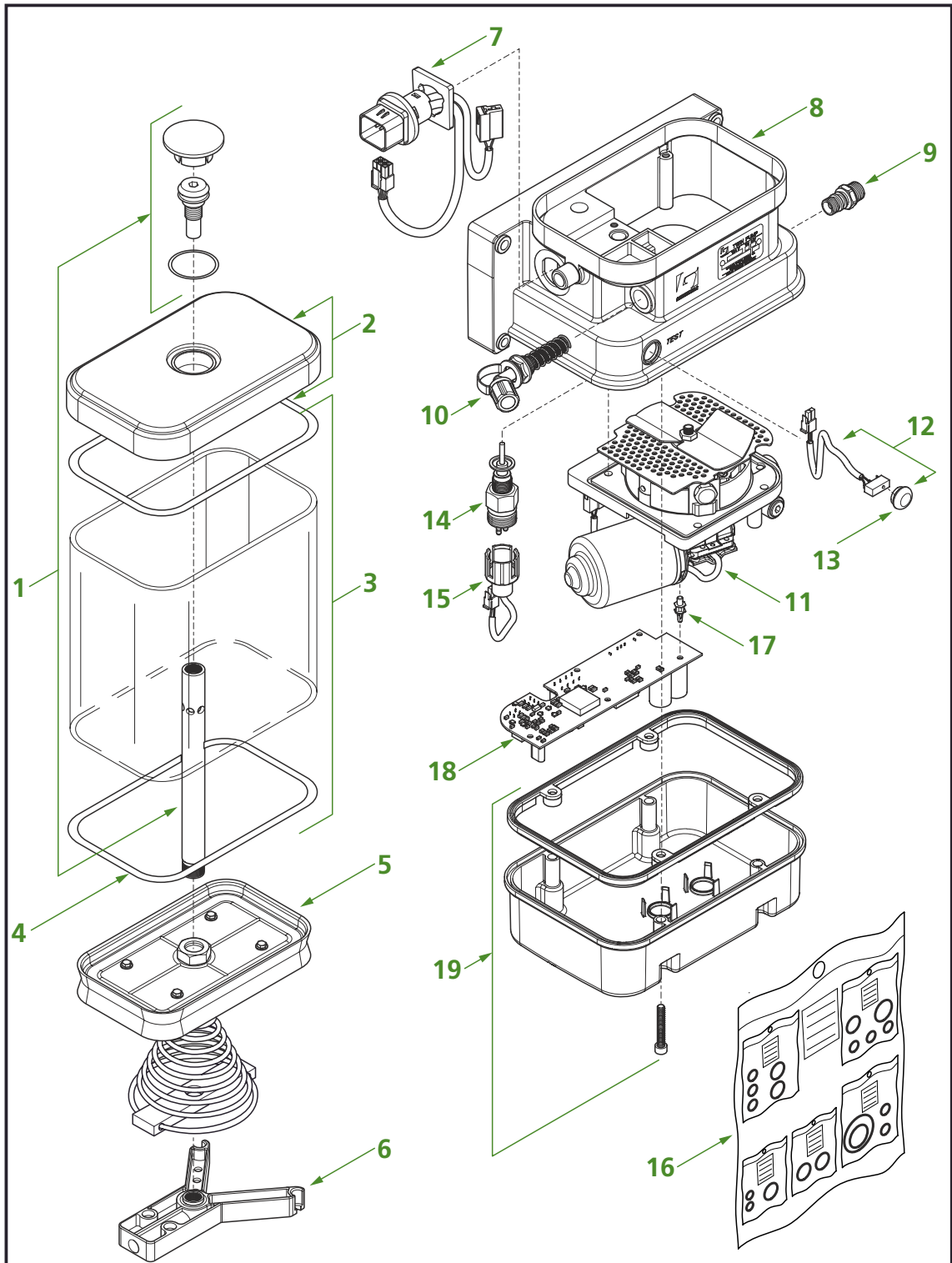


Release date: December 2015



YOUR EFFICIENCY IS OUR CHALLENGE

Automatic Twin Greasing System



Release date: December 2015

1.1 Twin-3 pumps 3 - 4 liters

<i>P/n new</i>	<i>P/n old</i>	<i>Supply voltage</i>	<i>Capacity reservoir</i>	<i>Grease delivery</i>	<i>Maximum pressure</i>
F124634	-	12 Vdc	3 liters	12 cc / min	250 bar
F124636	-	24 Vdc	3 liters	12 cc / min	250 bar
F124663 ¹⁾	-	24 Vdc	3 liters	12 cc / min	250 bar
F124631	-	12 Vdc	4 liters	12 cc / min	250 bar
F124630	-	24 Vdc	4 liters	12 cc / min	250 bar
F124662 ¹⁾	-	24 Vdc	4 liters	12 cc / min	250 bar
F124669 ²⁾	-	24 Vdc	4 liters	12 cc / min	250 bar

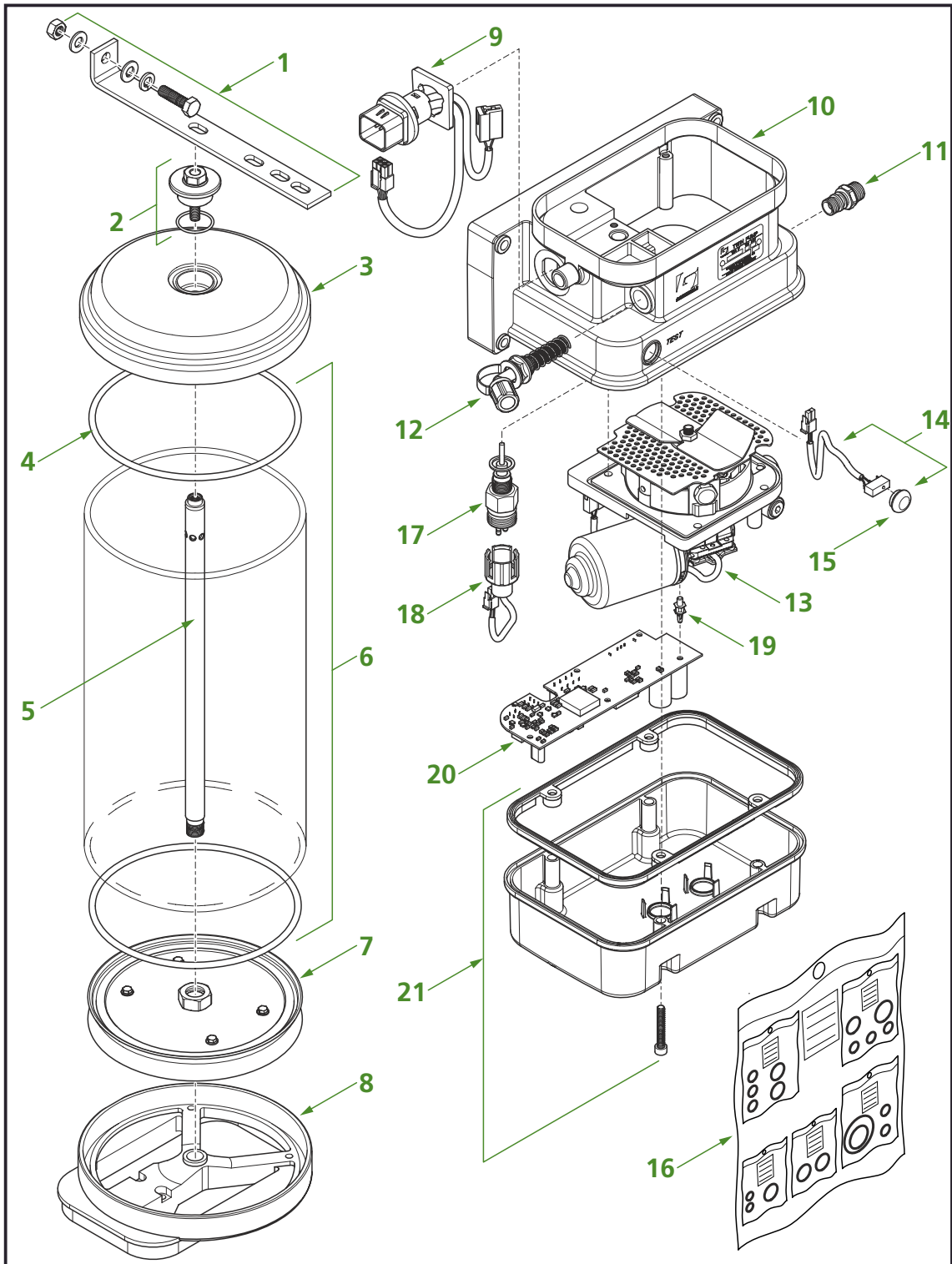
¹⁾ Pump with ø12mm outlets (M18x1.5).

²⁾ Pump with CAN-bus communication.

<i>Pos</i>	<i>P/n new</i>	<i>P/n old</i>	<i>Description</i>	<i>Pos</i>	<i>P/n new</i>	<i>P/n old</i>	<i>Description</i>
1	F121173	-	Shaft kit 3 l reservoir	10	F118170	-	Grease filter kit
	F121160	-	Shaft kit 4 l reservoir	11	F126308	-	OSLV pump unit 12V
2	F112915	88701	Cover + O-ring		F131503	-	ELVI pump unit 12V
3	F112861	89201	Reservoir kit 3 liter		F126122	-	OSLV pump unit 24V
	F113224	00117	Reservoir kit 4 liter		F131468	-	ELVI pump unit 24V
4	F111856	89301	O-ring	12	F170210		Test switch kit
5	F112862	89001	Follower plate 3 l	13	F117253	87301	Push butt. test switch
	F127230	-	Follower plate 4 l	14	F112410	-	Low level switch
6	F115745	17316	Support	15	F112868	87601	Cable low level switch
7	F601785	-	Cable harness	16	F112863	88401	Sealing kit
	F601786	-	Cable harness / CAN	17	F111296	88301	Timer clip
8	F111753	-	Pump body	18	F126376	-	Timer 12 / 24 Vdc
9	F114924	96701	Outlet M16x1.5	19	F112864	87701	Bottom cover
	F125438	-	Outlet M18x1.5				

Release date: December 2015

Automatic Twin Greasing System



Release date: December 2015

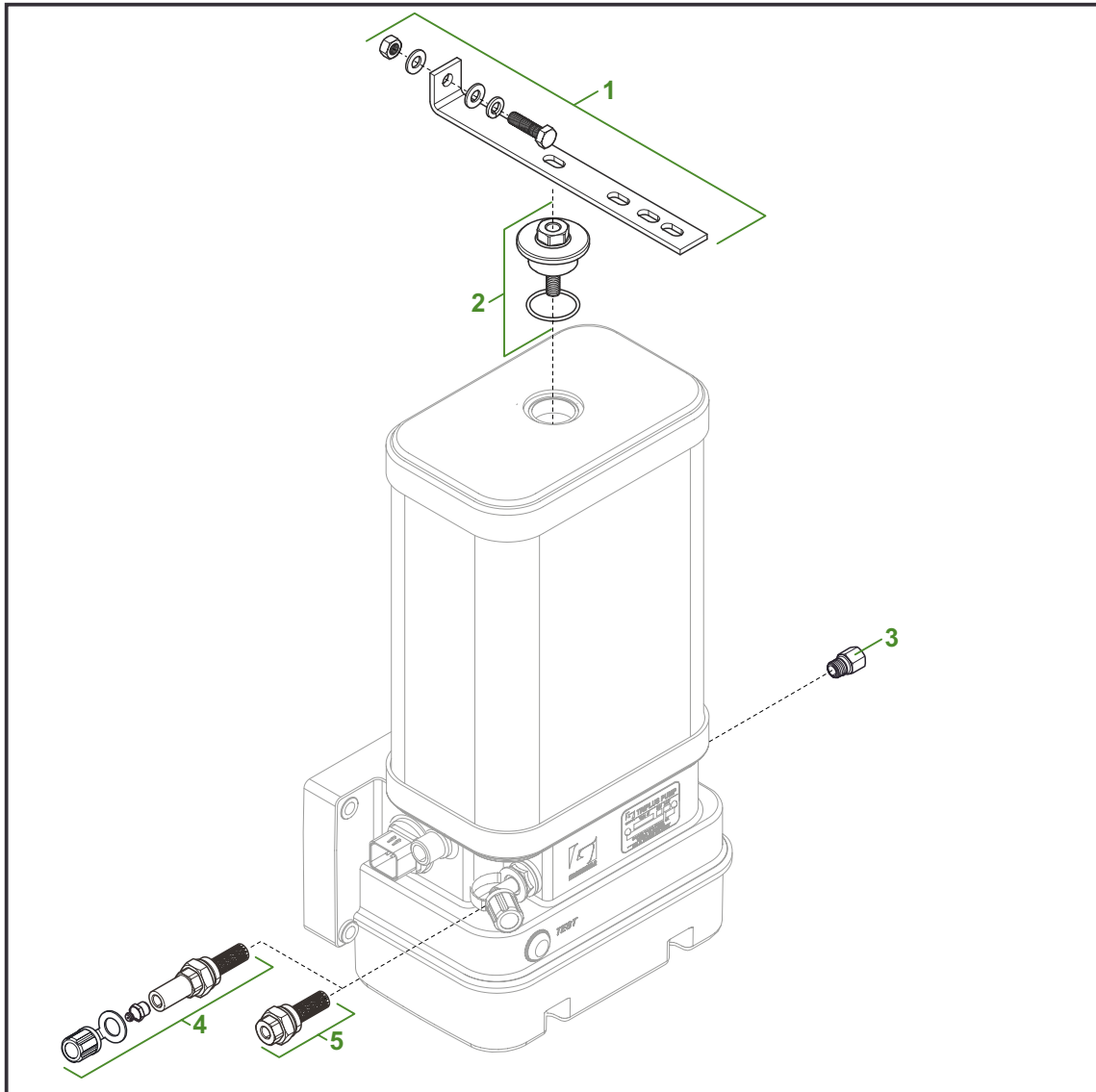
1.2 Twin-3 pumps 8 liters

<i>P/n new</i>	<i>P/n old</i>	<i>Supply voltage</i>	<i>Capacity reservoir</i>	<i>Grease delivery</i>	<i>Maximum pressure</i>
F124635	-	12 Vdc	8 liters	12 cc / min	250 bar
F124637	-	24 Vdc	8 liters	12 cc / min	250 bar
F124671 ¹⁾	-	24 Vdc	8 liters	12 cc / min	250 bar

¹⁾ Pump with CAN-bus communication.

<i>Pos</i>	<i>P/n new</i>	<i>P/n old</i>	<i>Description</i>	<i>Pos</i>	<i>P/n new</i>	<i>P/n old</i>	<i>Description</i>
1	F116961	-	Bracket kit reservoir	13	F126308	-	OSLV pump unit 12V
2	F604158	-	Screw + O-ring		F131503	-	ELVI pump unit 12V
3	F103049	37501	Reservoir cover		F126122	-	OSLV pump unit 24V
4	F110151	30601	O-ring		F131468	-	ELVI pump unit 24V
5	F121174	21417	Shaft 8 l reservoir	14	F170210		Test switch kit
6	F172535	-	Reservoir kit 8 liter	15	F117253	87301	Push butt. test switch
7	F117029	21517	Follower plate 6 l - 8 l	16	F112863	88401	Sealing kit
8	F117037	-	Adapter 4 l -> 8l	17	F117030	21617	Low level switch
9	F601785	-	Cable harness	18	F112868	87601	Cable low level switch
	F601786	-	Cable harness / CAN	19	F111296	88301	Timer clip
10	F111753	-	Pump body	20	F126376	-	Timer 12 / 24 Vdc
11	F114924	96701	Outlet M16x1.5	21	F112864	87701	Bottom cover
12	F118170	-	Grease filter kit				

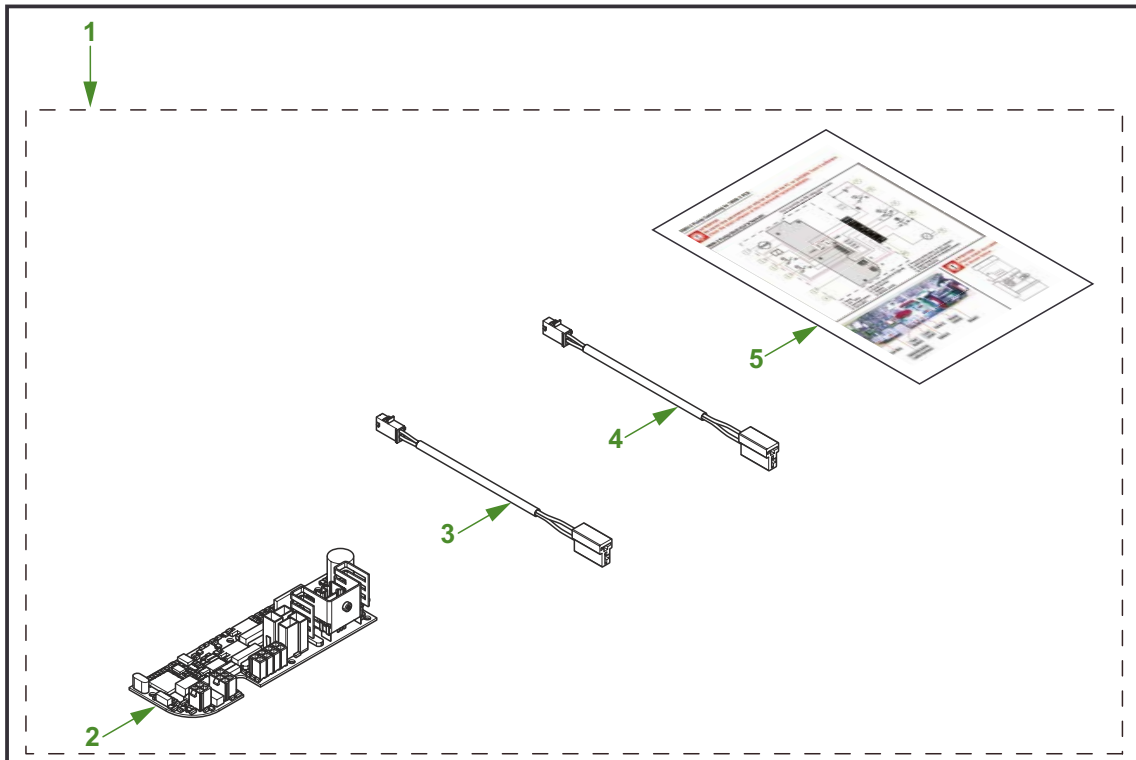
1.3 Optional parts



Pos	P/n new	P/n old	Description
1	F116961		Bracket kit reservoir
2	F604159		Screw + O-ring
3	F112487		Grease outlet 1/4" i/d
4	F601782	-	Grease filter kit M8x1 i/d, extra long
5	F114161	87201	Grease filter kit G1/4" i/d

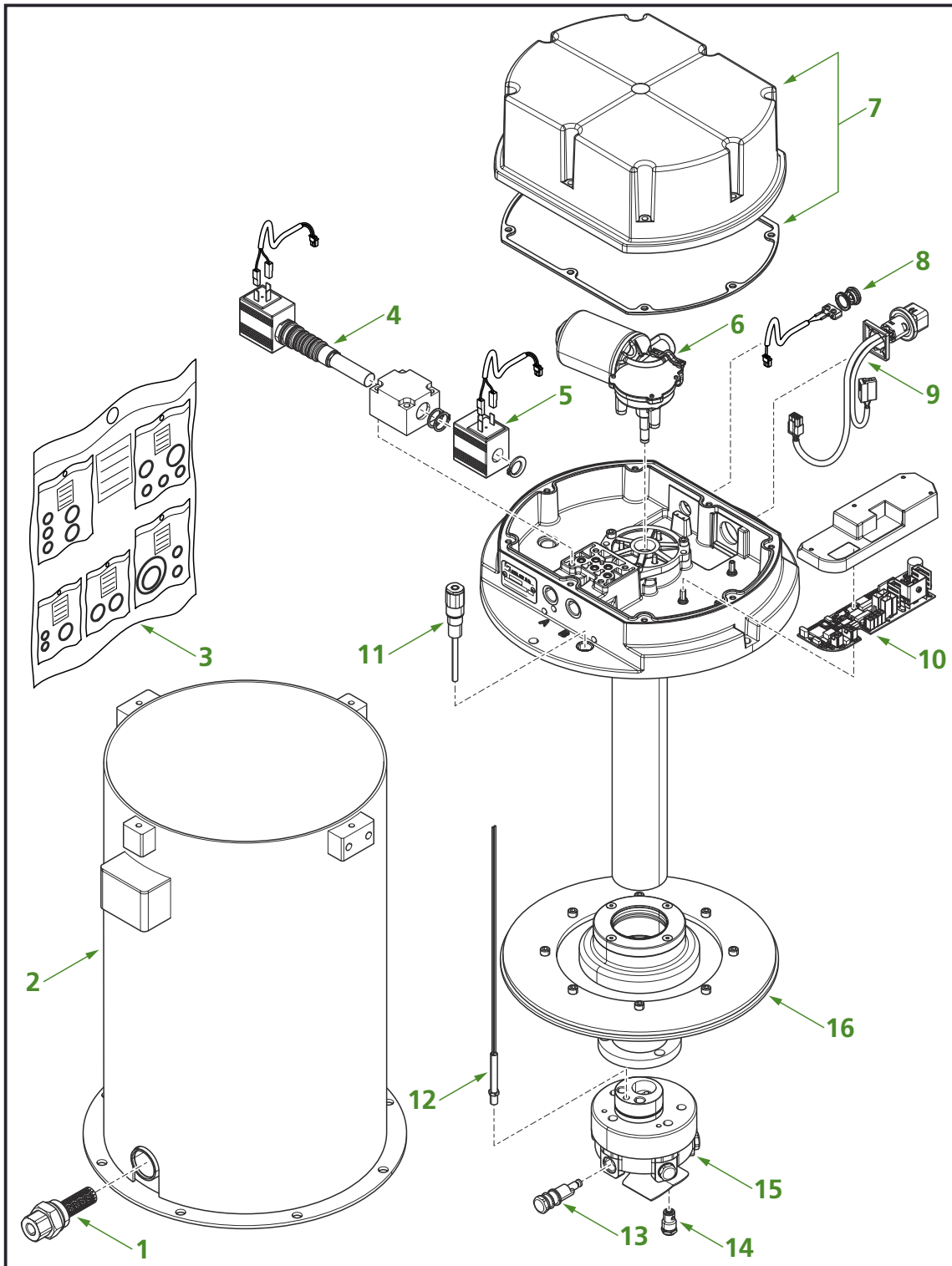
Release date: December 2015

1.4 Timer repair kit Twin-2 -> Twin-3



Pos	P/n new	P/n old	Description
1	F129909	-	Timer repair kit Twin-2 -> Twin-3
2	F126376	-	Timer 12 / 24 Vdc
3	F129898	-	Cable harness pump connector / timer power
4	F129897	-	Cable harness timer / motor
5	F129910	-	Instruction card

Automatic Twin Greasing System



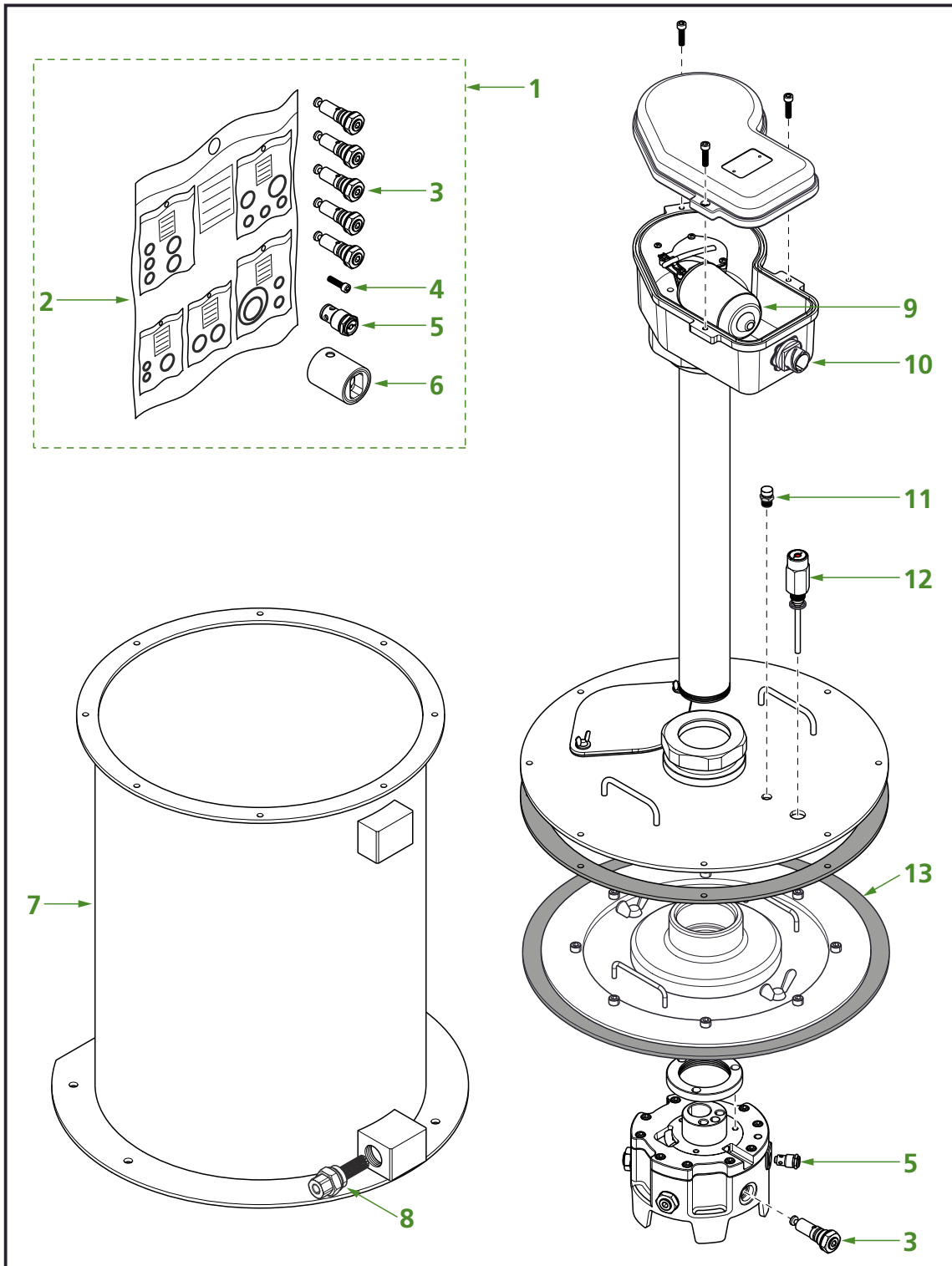
Release date: December 2015

1.5 Twin-3 refillable barrel pumps 20 liters

<i>P/n new</i>	<i>P/n old</i>	<i>Supply voltage</i>	<i>Capacity reservoir</i>	<i>Grease delivery</i>	<i>Maximum pressure</i>
F126630	-	24 Vdc	20 liters	20 cc / min	250 bar

<i>Pos</i>	<i>P/n new</i>	<i>P/n old</i>	<i>Description</i>	<i>Pos</i>	<i>P/n new</i>	<i>P/n old</i>	<i>Description</i>
1	F126439	16317	Grease filter kit	9	F124298	-	Cable harness
2	F126688	-	Grease drum 20 l	10	F126376	-	Timer 12 / 24 Vdc
3	F210491	-	Sealing kit	11	F126634	-	Max., level indicator
4	F126642	-	5/2-way valve	12	F127086	-	Low level switch
5	F210492	-	Magnet coil 24 Vdc	13	F114923	-	Piston kit
6	F126649	-	Motor 24 Vdc	14	F114230	-	Pressure release valve
7	F210494	-	Cover kit	15	F126635	-	Pump unit
8	F210493	-	Test button kit	16	F128873	-	Follower plate

Automatic Twin Greasing System



Release date: December 2015

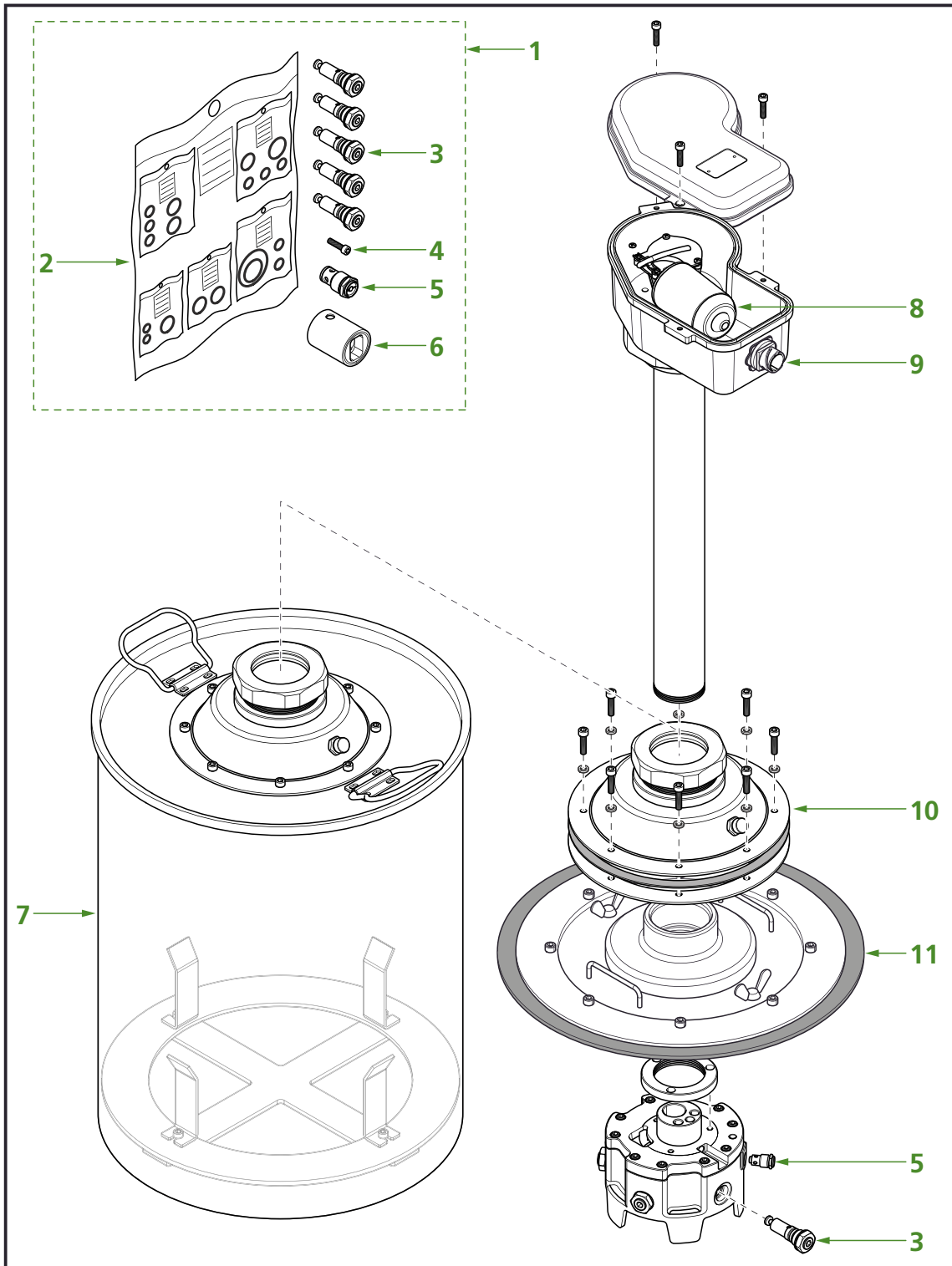
1.6 Twin-3 refillable barrel pumps 40 liters

<i>P/n new</i>	<i>P/n old</i>	<i>Supply voltage</i>	<i>Capacity reservoir</i>	<i>Grease delivery</i>	<i>Maximum pressure</i>
F119656	-	24 Vdc	40 liters	25 cc / min	250 bar

<i>Pos</i>	<i>P/n new</i>	<i>P/n old</i>	<i>Description</i>	<i>Pos</i>	<i>P/n new</i>	<i>P/n old</i>	<i>Description</i>
1	F202360	-	Repair kit	8	F126439	16317	Grease filter kit
2	F202361	-	O-ring	9	F121391	-	Motor 24 Vdc
3	F177843	-	Piston	10	F179811	-	Connector kit
4	F118378	-	Screw M6x6	11	F119125	-	Breather kit
5	F114230	-	Valve 250 bar	12	F120619	-	Level sensor
6	F119494	-	Motor coupling	13	F129027	-	Follower plate
7	F120320	-	Refilling drum				

Release date: December 2015

Automatic Twin Greasing System



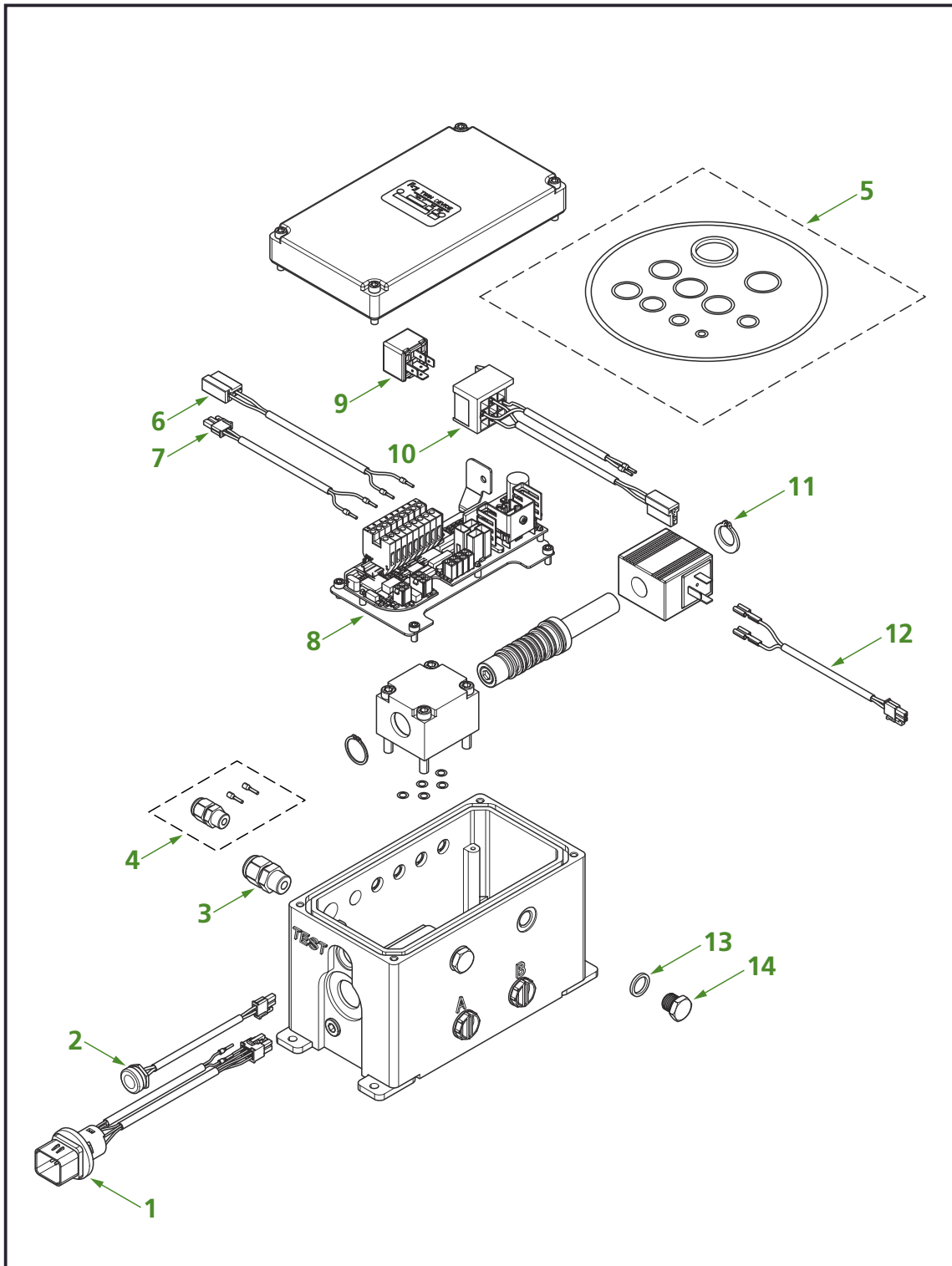
Release date: December 2015

1.7 Twin barrel pumps 18 - 200 liters

<i>P/n new</i>	<i>P/n old</i>	<i>Supply voltage</i>	<i>Barrel height</i>	<i>Total height</i>	<i>Grease delivery</i>	<i>Maximum pressure</i>
F117930	-	24 Vdc	500mm/19.7"	800mm/31.5"	25 cc / min	250 bar
F119888	-	24 Vdc	600mm/23.6"	900mm/35.5"	25 cc / min	250 bar
F119592	-	24 Vdc	700mm/27.6"	1000mm/39.4"	25 cc / min	250 bar
F119890	-	24 Vdc	800mm/31.5"	1100mm/43.3"	25 cc / min	250 bar
F119891	-	24 Vdc	900mm/35.5"	1200mm/47.3"	25 cc / min	250 bar

<i>Pos</i>	<i>P/n new</i>	<i>P/n old</i>	<i>Description</i>	<i>Pos</i>	<i>P/n new</i>	<i>P/n old</i>	<i>Description</i>
1	F202360	-	Repair kit	8	F121391	-	Motor 24 Vdc
2	F202361	-	O-ring	9	F179811	-	Connector kit
3	F177843	-	Piston	10	F119593	-	Cover flange kit
4	F118378	-	Screw M6x6	11	F119586	-	Follower plate 282-288
5	F114230	-	Valve 250 bar		F119587	-	Follower plate 355-361
6	F119494	-	Motor coupling		F119588	-	Follower plate 370-376
7	F119425	-	Pail 15 l - 25 l		F120538	-	Follower plate 572-578

Release date: December 2015



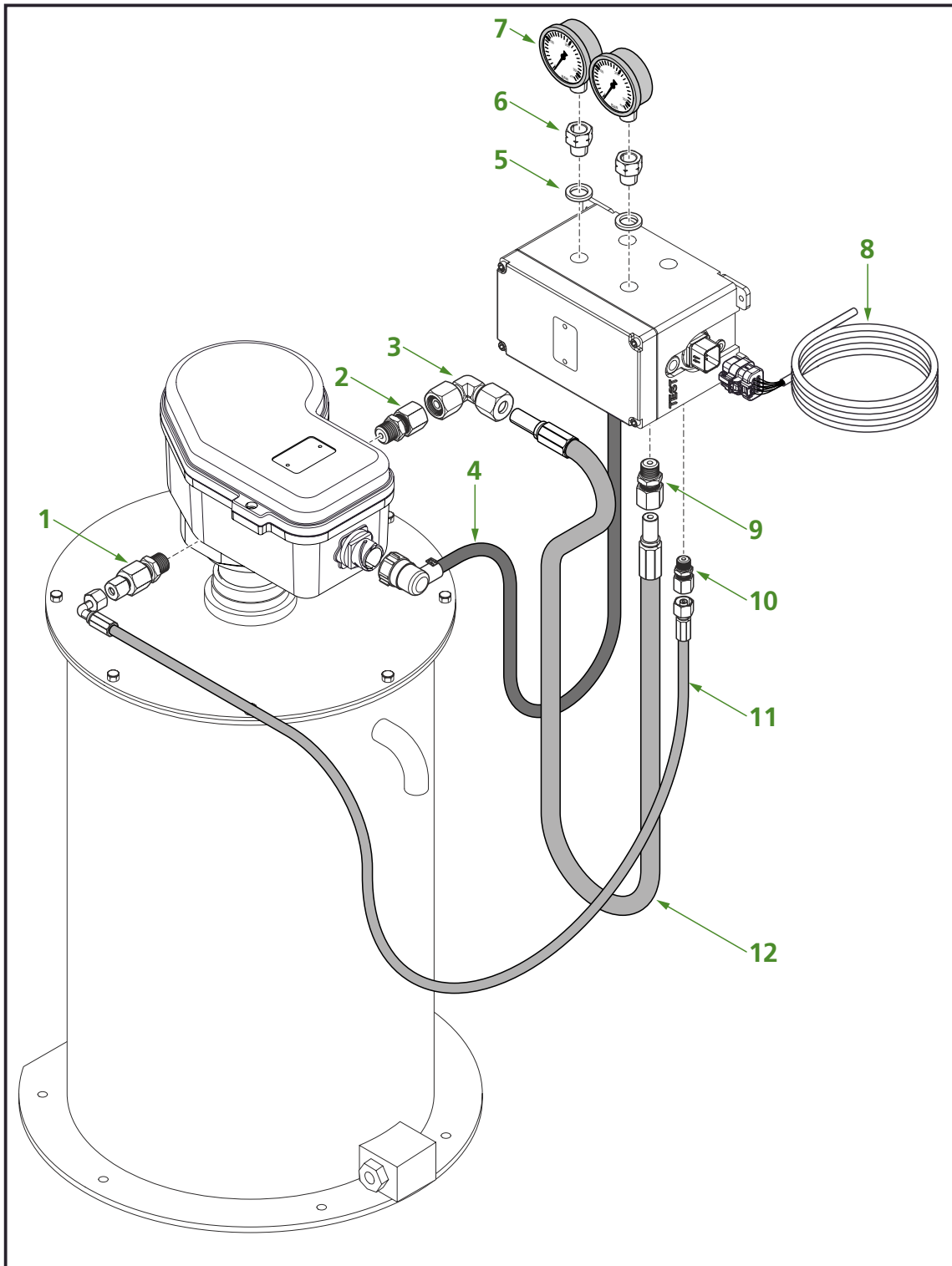
Release date: December 2015

1.8 Twin-3 device 24 Vdc

<i>P/n new</i>	<i>P/n old</i>	<i>Supply voltage</i>	<i>Maximum pressure</i>
F126703	-	24 Vdc	250 bar

<i>Pos</i>	<i>P/n new</i>	<i>P/n old</i>	<i>Description</i>	<i>Pos</i>	<i>P/n new</i>	<i>P/n old</i>	<i>Description</i>
1	F126704	-	Connector + cable	8	F126376	-	Timer 12 / 24 Vdc
2	F119100	-	Test switch + cable	9	F113547	97301	Relay 24 Vdc + diode
3	F119577	190028	Cable gland PG11	10	F210554	-	Relay socket + cable
4	F120836	-	Cable gland PG7	11	F178597	-	5/2-way valve
5	F178796	-	O-ring kit	12	F119637	-	5/2-way valve cable
6	F126795	-	Power supply cable	13	F104436	83901	Sealing ring
7	F119115	-	Level switch cable	14	F000686	32901	Plug G1/4"

Automatic Twin Greasing System



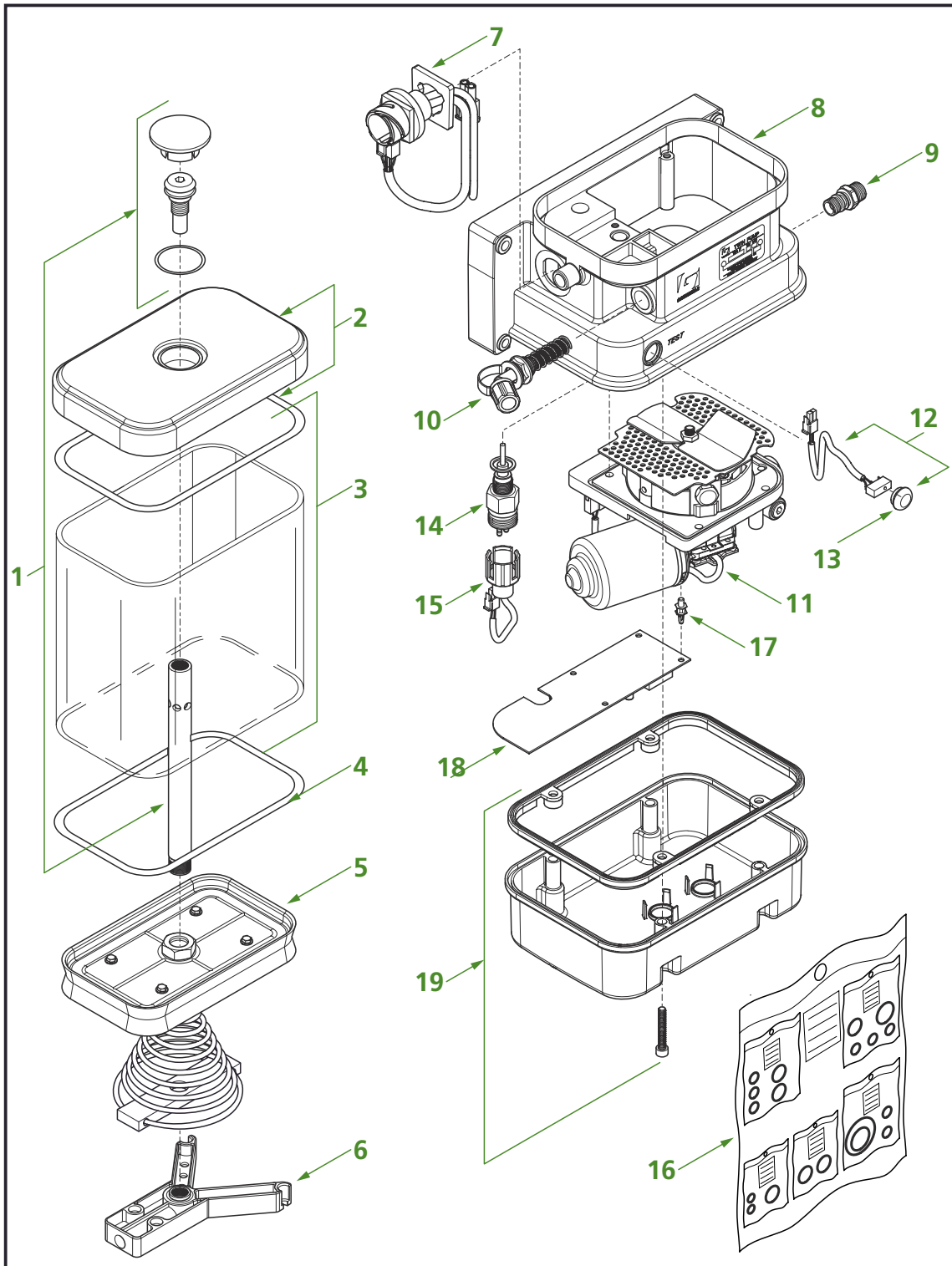
Release date: December 2015

1.9 Twin-3 device installation kit

<i>P/n new</i>	<i>P/n old</i>	<i>Supply voltage</i>	<i>Maximum pressure</i>
F127170	-	-	-

<i>Pos</i>	<i>P/n new</i>	<i>P/n old</i>	<i>Description</i>	<i>Pos</i>	<i>P/n new</i>	<i>P/n old</i>	<i>Description</i>
1	F123571	-	Non-return valve	7	F119638	-	Manometer 0-400 bar
2	F119639	-	Connector 3/8"-ø12mm	8	F123724	-	Cable harness 7m.
3	F118904	49502	Connector ø12mm	9	F119639	-	Connector 3/8"-ø12mm
4	F119581	-	Cable harness 2m.	10	F120601	-	Connector 3/8"-ø10mm
5	F124062	-	Sealing ring	11	F120600	-	HPH 1/4" S10-1500-E10
6	F127431	-	Connector G1/4"	12	F178596	-	HPH 3/8" S12-1500-S12

Release date: December 2015



Release date: December 2015

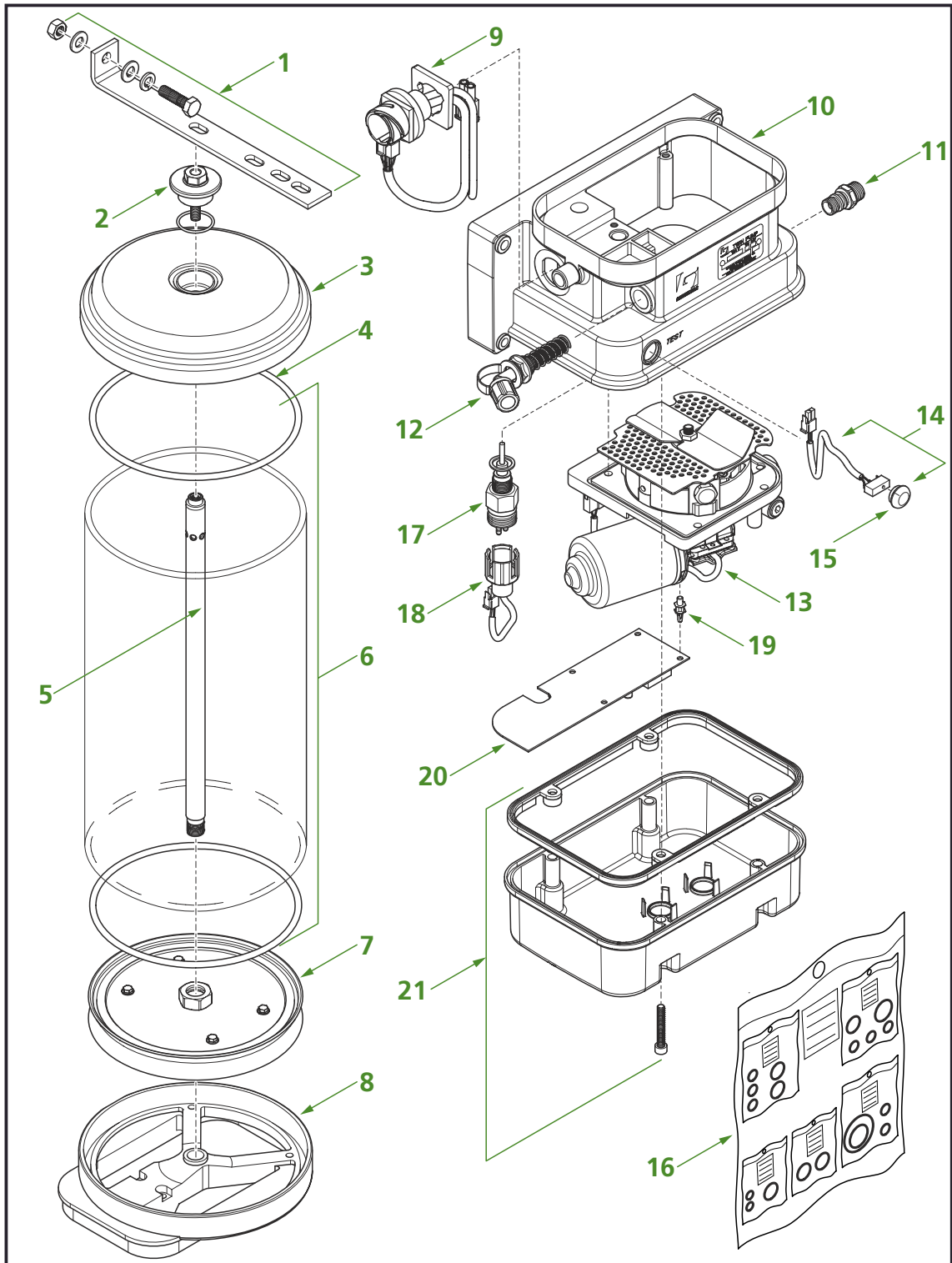
1.10 Twin-2 pumps 3 - 4 liters (expired, replaced by Twin-3)

<i>P/n new</i>	<i>P/n old</i>	<i>Supply voltage</i>	<i>Capacity reservoir</i>	<i>Grease delivery</i>	<i>Maximum pressure</i>
F111956	-	12 Vdc	3 liters	12 cc / min	250 bar
F111842	-	24 Vdc	3 liters	12 cc / min	250 bar
F112589	-	12 Vdc	4 liters	12 cc / min	250 bar
F112126	-	24 Vdc	4 liters	12 cc / min	250 bar

<i>Pos</i>	<i>P/n new</i>	<i>P/n old</i>	<i>Description</i>	<i>Pos</i>	<i>P/n new</i>	<i>P/n old</i>	<i>Description</i>
1	F121173	-	Shaft kit 3 l reservoir	10	F118170	-	Grease filter kit
	F121160	-	Shaft kit 4 l reservoir	11	F126268	-	Pump unit 12 Vdc
2	F112915	88701	Cover + O-ring		F126201	-	Pump unit 24 Vdc
3	F112861	89201	Reservoir kit 3 liter	12	F170210	87401	Test switch kit
	F113224	01117	Reservoir kit 4 liter	13	F117253	87301	Push butt. test switch
4	F111856	89301	O-ring	14	F112410	-	Low level switch
5	F112862	89001	Follower plate 3 l	15	F112868	87601	Cable low level switch
	F127230	-	Follower plate 4 l	16	F112863	88401	Sealing kit
6	F115745	17316	Support	17	F111296	88301	Timer clip
7	F112539	87501	Cable harness	18	F129909		Timer exchange kit*)
8	F111753	-	Pump body	19	F112864	87701	Bottom cover
9	F114924	96701	Outlet M16x1.5				

*) Replaces F117060 / F117059 timers

Automatic Twin Greasing System



Release date: December 2015

1.11 Twin-2 pumps 6 - 8 liters (expired, replaced by Twin-3)

<i>P/n new</i>	<i>P/n old</i>	<i>Supply voltage</i>	<i>Capacity reservoir</i>	<i>Grease delivery</i>	<i>Maximum pressure</i>
F116540	-	24 Vdc	6 liters	12 cc / min	250 bar
F116763	-	12 Vdc	8 liters	12 cc / min	250 bar
F116003	-	24 Vdc	8 liters	12 cc / min	250 bar

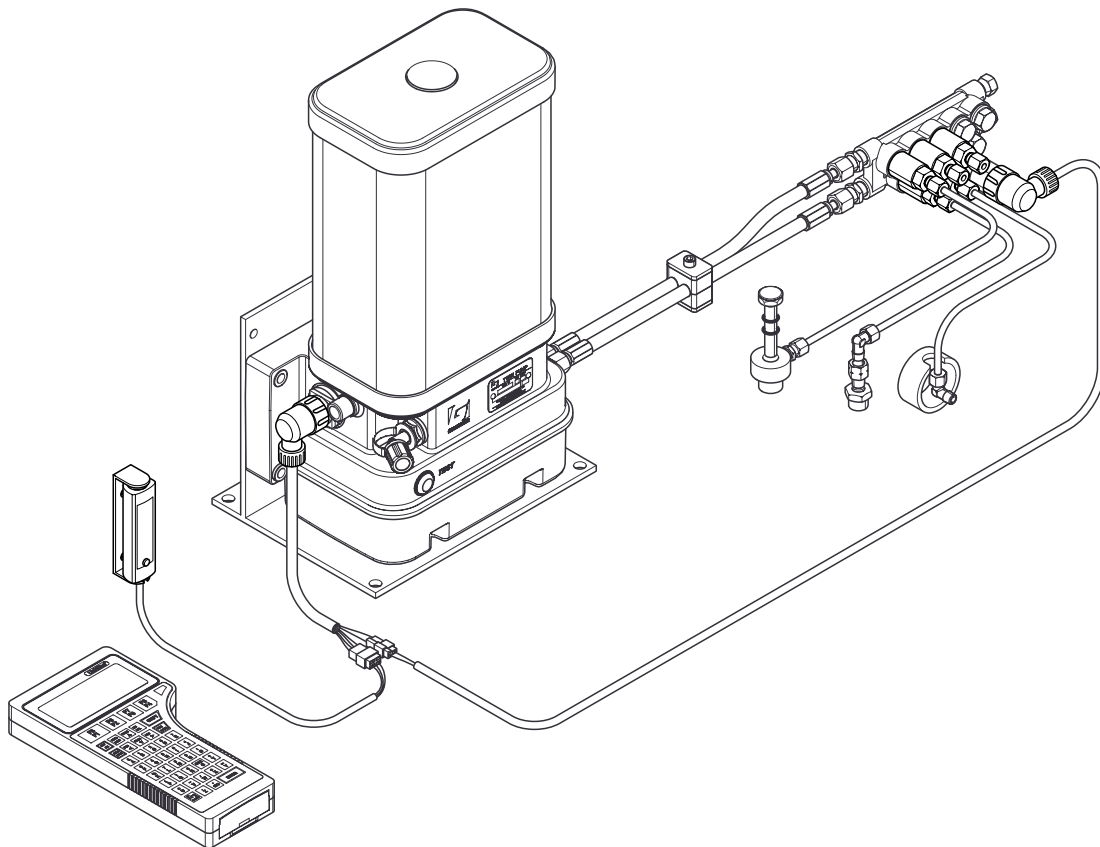
<i>Pos</i>	<i>P/n new</i>	<i>P/n old</i>	<i>Description</i>	<i>Pos</i>	<i>P/n new</i>	<i>P/n old</i>	<i>Description</i>
1	F116961	-	Bracket kit reservoir	11	F114924	96701	Outlet M16x1.5
2	F120941	-	Screw	12	F118170	-	Grease filter kit
3	F103049	37501	Reservoir cover	13	F126268	-	Pump unit 12 Vdc
4	F110151	30601	O-ring		F126201	-	Pump unit 24 Vdc
5	F127441	-	Shaft 6 l reservoir	14	F170210	87401	Test switch kit
	F121174	21417	Shaft 8 l reservoir	15	F117253	87301	Push butt. test switch
6	F111410	69201	Reservoir 6 liter	16	F112863	88401	Sealing kit
	F172535	-	Reservoir kit 8 liter	17	F117030	21617	Low level switch
7	F117029	21517	Follower plate 6 l - 8 l	18	F112868	87601	Cable low level switch
8	F117037	-	Adapter 4 l -> 8l	19	F111296	88301	Timer clip
9	F112539	87501	Cable harness	20	F129909		Timer exchange kit*
10	F111753	-	Pump body	21	F112864	87701	Bottom cover

*) Replaces F117060 / F117059 timers

Notes

Release date: December 2015

2. ELECTRICAL PARTS

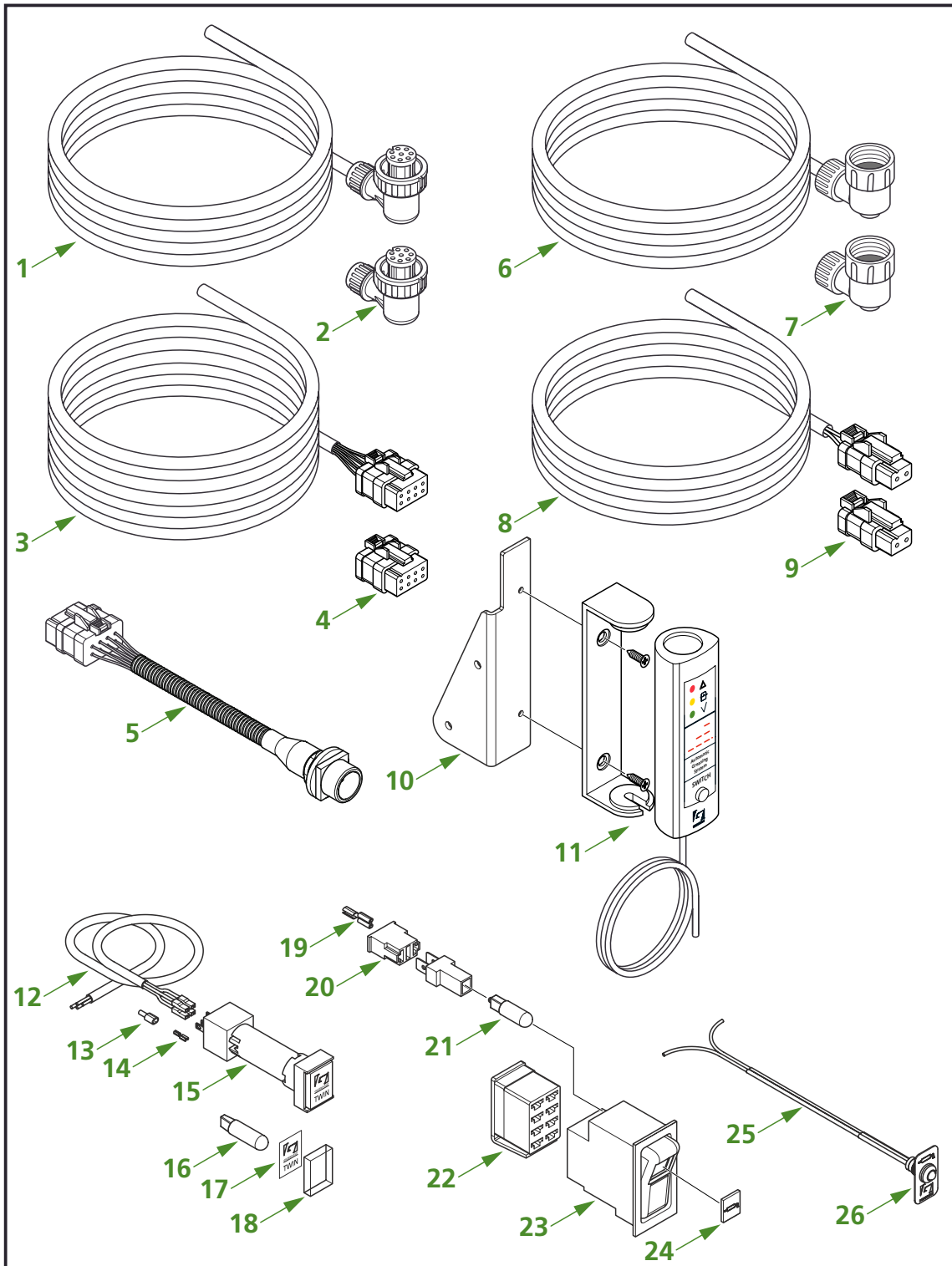


Release date: December 2015



YOUR EFFICIENCY IS OUR CHALLENGE

Automatic Twin Greasing System



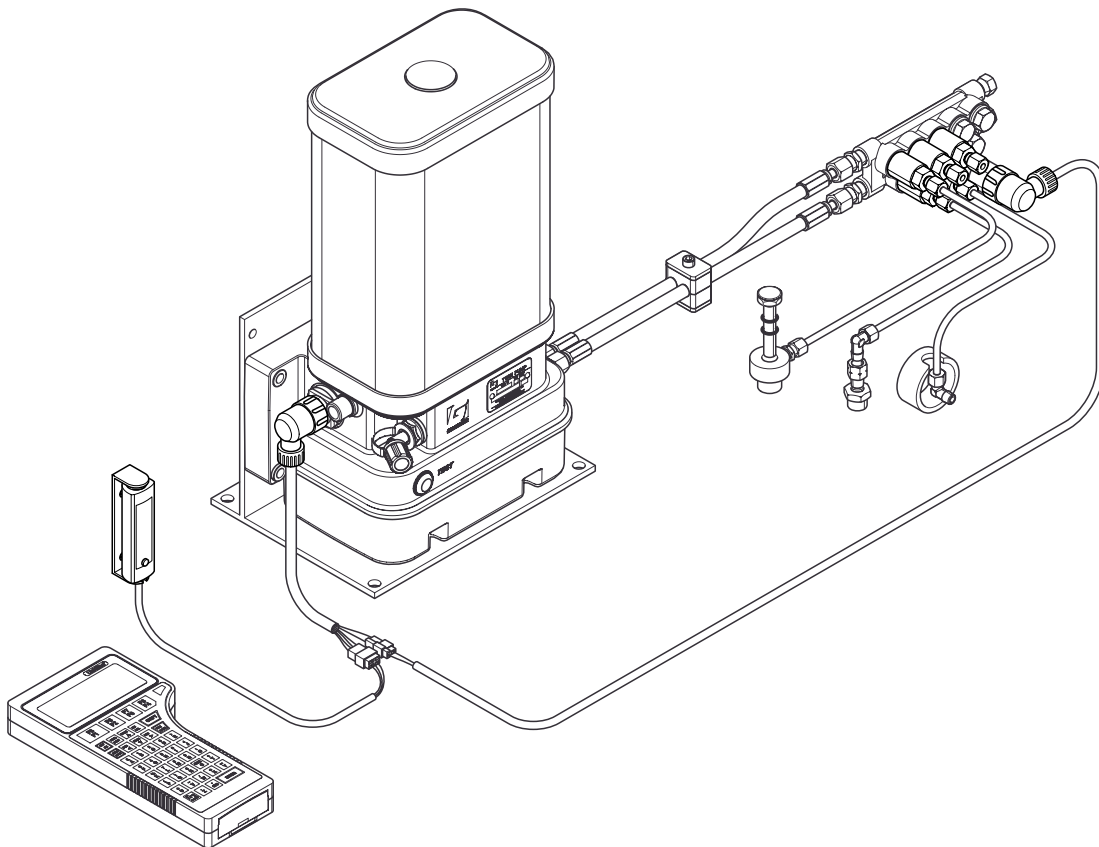
Release date: December 2015

2.1 Electrical parts Twin 2 & 3

Pos	P/n new	P/n old	Description
1	F107901	89801	Twin-2 cable harness 7-core / 3 meter
	F107898	82301	Twin-2 cable harness 7-core / 7 meter
	F107897	82201	Twin-2 cable harness 7-core / 15 meter
2	F110890	73601	Twin-2 connector kit 8-core
3	F123724	-	Twin-3 cable harness 8-core / 7 meter
	F123728	-	Twin-3 cable harness 8-core / 15 meter
4	F127305	-	Twin-3 connector kit 8-core
5	F205696	-	Twin-2 -> Twin-3 cable
6	F107895	04812	Twin-2 pressure switch cable harness 2-core / 8 meter
	F107894	04912	Twin-2 pressure switch cable harness 2-core / 15 meter
	F109506	25812	Twin-2 pressure switch cable harness 2-core / 25 meter
7	F101156	19008	Twin-2 pressure switch connector kit
8	F123727	-	Twin-3 pressure switch cable harness 2-core / 8 meter
	F123725	-	Twin-3 pressure switch cable harness 2-core / 15 meter
	F123726		Twin-3 pressure switch cable harness 2-core / 25 meter
9	F127306	-	Twin-3 pressure switch connector kit
10	F170372	180019	In-cab display bracket 90°
11	F204524	-	Twin-3 in-cab display
12	F106633	15033	Cable harness
13	F113015	00617	Cover flat plug sleeve
14	F113014	00517	Flat plug sleeve
15	F112488	13233	Switch with control lamp 24 Vdc
16	F112769	24933	Bulb 12 vdc
	F116127	20633	Bulb 24 Vdc
17	F174171	86901	Text window Twin
18	F112842	86801	Window yellow
19	F104635	67806	Receptacle 0.75 QMM female
20	F113589	20022	Connector 2-poles
21	F122809	13322	Bulb 12 Vdc
	F122991	13222	Bulb 24 Vdc
22	F113590	17417	Connector 8-poles
23	F113966	12817	Switch N/O 24 Vdc
24	F113967	16422	Lamp cover yellow
25	F105891	24009	LED yellow
26	F120306	97601	Text plate LED

Release date: December 2015

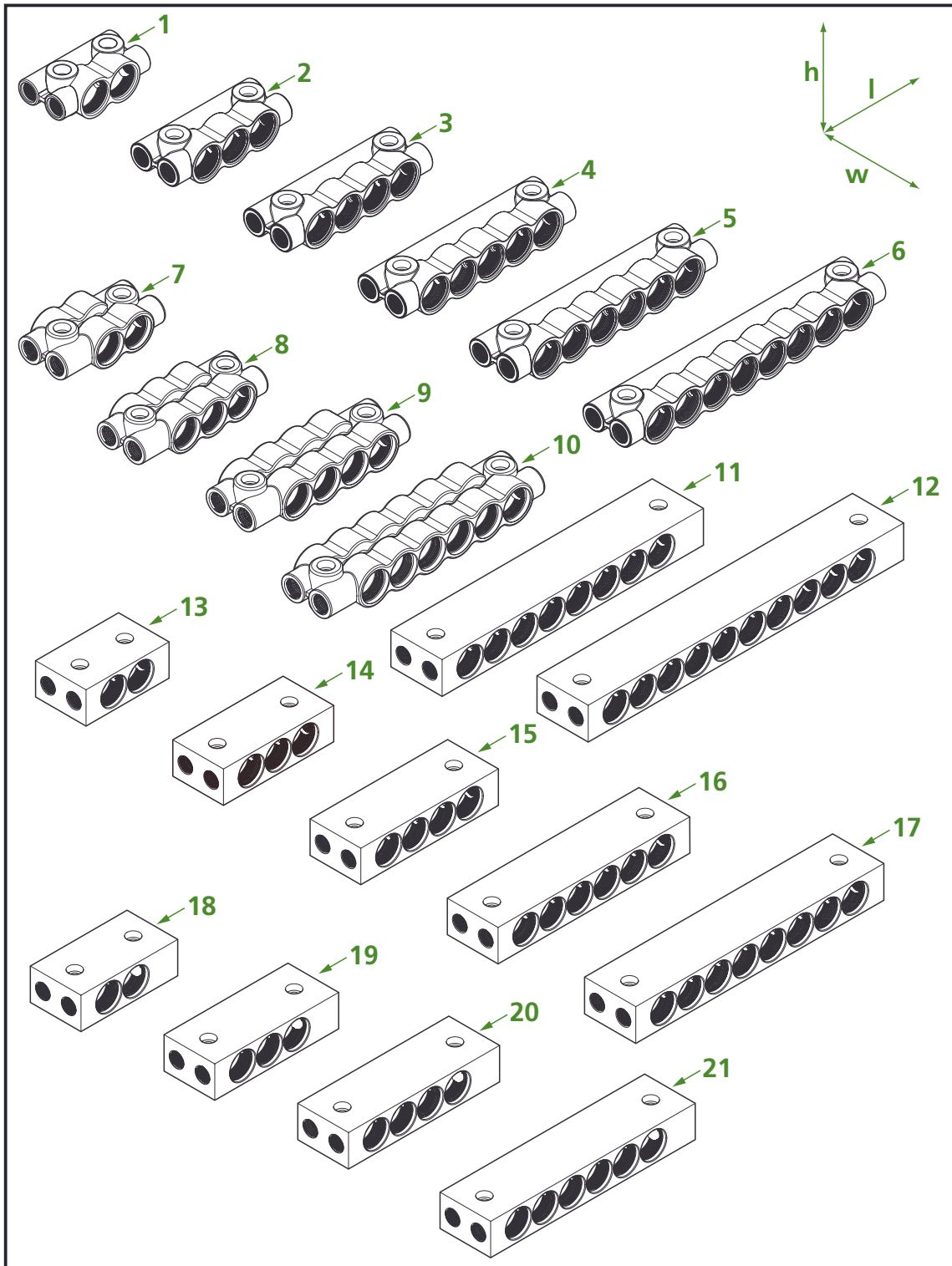
3. DISTRIBUTION BLOCKS



Release date: December 2015



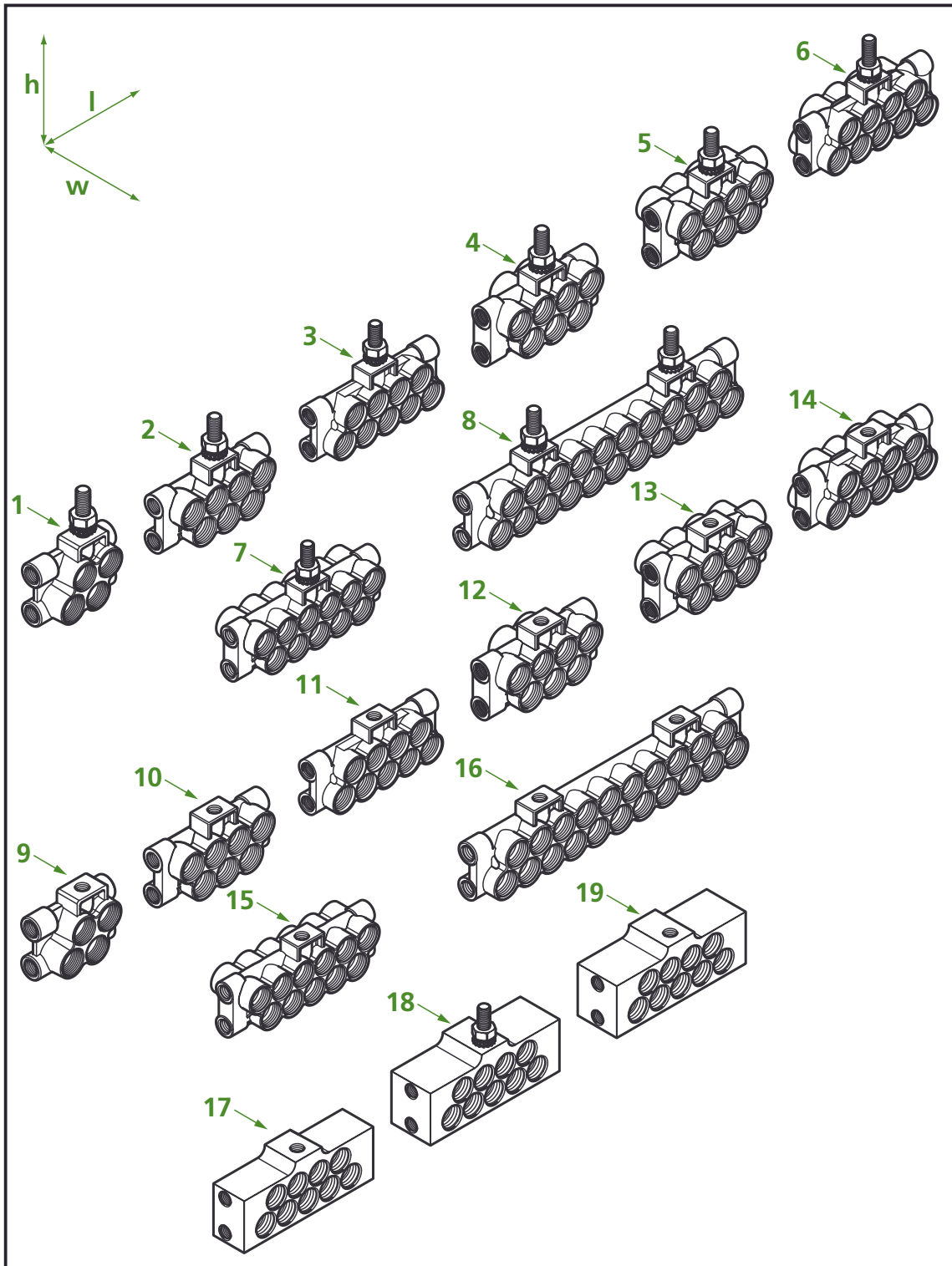
YOUR EFFICIENCY IS OUR CHALLENGE



Release date: December 2015

3.1 Industrial distribution blocks

Pos	P/n new	P/n old	Description	Size (lxwxh)	Material
1	F111742	72901	2-port block	74x43.5x31	brass
2	F111636	75001	3-port block	98x43.5x31	brass
3	F111697	77101	4-port block	122x43.5x31	brass
	F127886	-	4-port block / heavy duty / M10 bolts	150x58.4x33	brass
4	F113615	06817	5-port block	146x43.5x31	brass
5	F111699	75601	6-port block	170x43.5x31	brass
6	F111638	70501	8-port block	218x43.5x31	brass
7	F111741	75501	2+2-port block	86x45x31	brass
8	F111639	76701	3+3-port block	110x45x31	brass
	F127884	-	3+3-port block / heavy duty / M10 bolts	126x58.4x33	brass
9	F111640	77201	4+4-port block	136x45x31	brass
	F127883	-	4+4-port block / heavy duty / M10 bolts	150x58.4x33	brass
10	F111642	79301	6+6-port block	182x45x31	brass
	F127885	-	6+6-port block / heavy duty / M10 bolts	202x58.4x33	brass
11	F211377	-	8+8-port block	230x45x31	brass
12	F112855	96401	10+10-port block	244x45x31	brass
13	F112531	43222	2-port block	74x45x28	inox
14	F112532	43322	3-port block	98x45x28	inox
15	F112533	43422	4-port block	122x45x28	inox
16	F112534	43522	6-port block	170x45x28	inox
17	F113616	52422	8-port block	218x45x28	inox
18	F112535	43622	2+2-port block	86x45x28	inox
19	F112536	43722	3+3-port block	110x45x28	inox
20	F112537	43822	4+4-port block	134x45x28	inox
21	F112538	43922	6+6-port block	182x45x28	inox

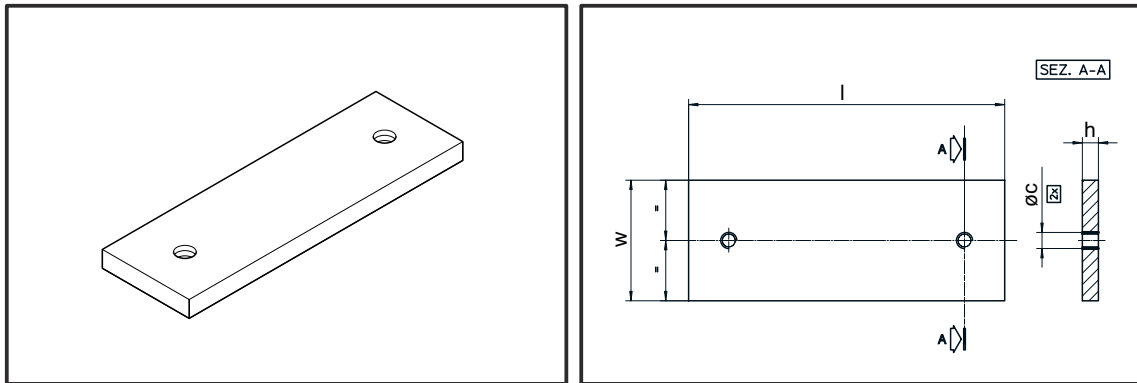


Release date: December 2015

3.2 Transport distribution blocks

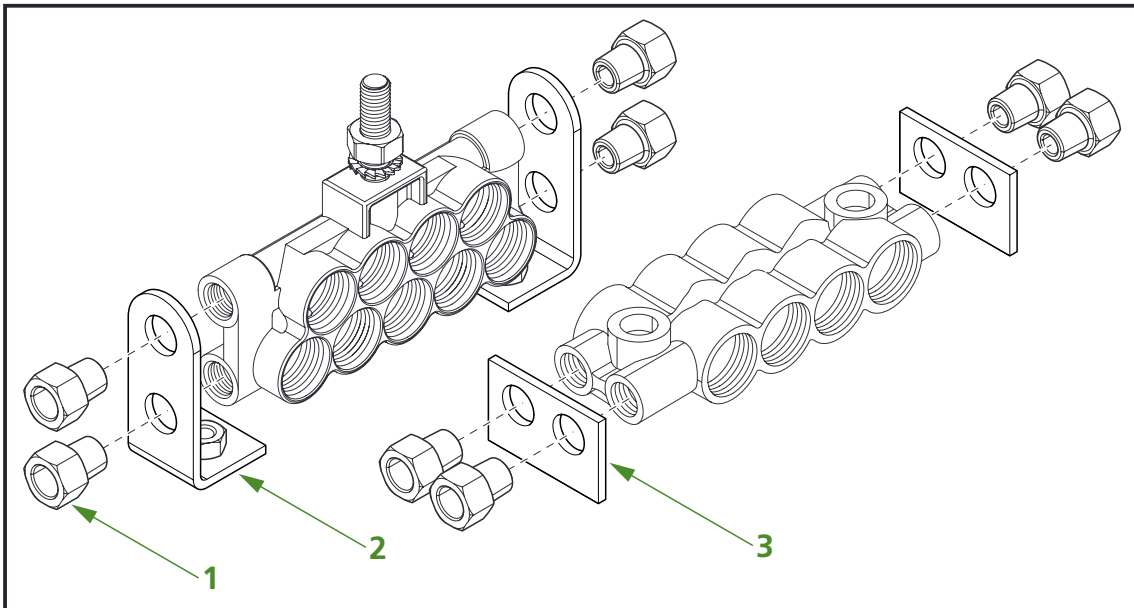
<i>Pos</i>	<i>P/n new</i>	<i>P/n old</i>	<i>Description</i>	<i>Size (lxwxh)</i>	<i>Material</i>
1	F111393	70301	4-port block inclusive stud	75x31.5x97.5	brass
2	F111394	70401	7-port block inclusive stud	111x31.5x97.5	brass
3	F111395	72601	9-port block inclusive stud	135x31.5x97.5	brass
4	F111396	70601	12-port block inclusive stud	111x44x97.5	brass
5	F111952	88501	14-port block inclusive stud	111x44x97.5	brass
6	F111953	83601	18-port block inclusive stud	135x44x97.5	brass
7	F116245	20217	22-port block inclusive stud	160x44x97.5	brass
8	F112875	99501	21-port block inclusive studs	280x31.5x97.5	brass
9	F110628	-	4-port block exclusive stud	75x31.5x62.5	brass
10	F110629	16717	7-port block exclusive stud	111x31.5x62.5	brass
11	F110630	08011	9-port block exclusive stud	135x31.5x62.5	brass
12	F110631	-	12-port block exclusive stud	111x44x62.5	brass
13	F112005	-	14-port block exclusive stud	111x44x62.5	brass
14	F112004	16817	18-port block exclusive stud	135x44x62.5	brass
15	F116180	20117	22-port block exclusive stud	160x44x62.5	brass
16	F112477	14117	21-port block exclusive studs	280x31.5x62.5	brass
17	F115173	16517	9-port block exclusive stud	146x35x60	inox
18	F170443	16617	18-port block inclusive stud	146x35x95	inox
19	F115174	-	18-port block exclusive stud	146x44x60	inox

3.3 Welding plates for industrial distribution blocks



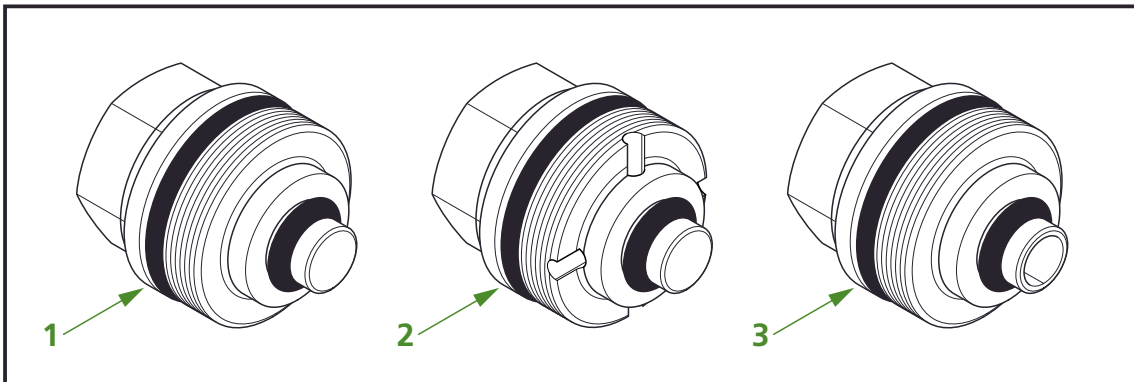
<i>P/n new</i>	<i>P/n old</i>	<i>Description</i>	<i>l</i>	<i>w</i>	<i>h</i>	<i>øc</i>	<i>Material</i>
F107458	81001	2-port block	70	45	6	M6x1	steel
F107459	81101	3-port block	94	45	6	M6x1	steel
F107460	81201	4-port block	118	45	6	M6x1	steel
F208297	-	4/4+4-port block heavy	150	60	12	M10x1.5	steel
F108244	08917	5-port block	142	45	6	M6x1	steel
F107461	81301	6-port block	166	45	6	M6x1	steel
F107462	81401	8-port block	214	45	6	M6x1	steel
F107463	81501	2+2-port block	82	45	6	M6x1	steel
F107464	81601	3+3-port block	106	45	6	M6x1	steel
F208296	-	3+3-port block heavy	124	60	12	M10x1.5	steel
F107465	81701	4+4-port block	130	45	6	M6x1	steel
F107466	81801	6+6-port block	178	45	6	M6x1	steel
F208298	-	6+6-port block heavy	202	60	12	M10x1.5	steel
F122923	02217	10+10-port block	278	45	6	M6x1	steel

3.4 Special brackets



Pos	P/n new	P/n old	Description
1	F209276	-	Adapter straight R1/4" - G1/4"
2	F209275	-	Bracket for transport distribution block
3	F209905	-	Bracket for industrial distribution block

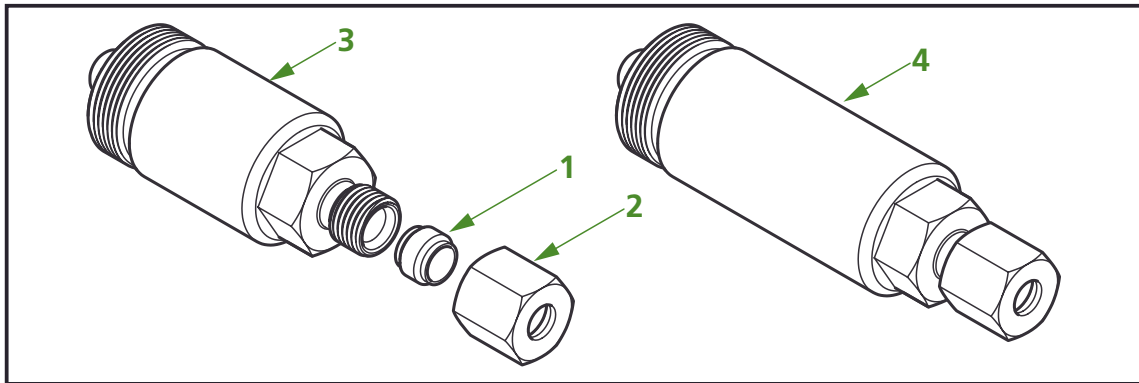
3.5 Shutt-of plugs & reduction adapters



Pos	P/n new	P/n old	Description	Material
1	F115460	70701	Shut-off plug M22x1	brass
	F112648	91501	Shut-off plug M22x1	inox
2	F111647	83701	Reduction adapter M22x1 - G1/4" side outlet	brass
	F115202	91701	Reduction adapter M22x1 - G1/4" side outlet	inox
3	F111612	83801	Reduction adapter M22x1 - G1/4" bottom outlet	brass
	F115201	91601	Reduction adapter M22x1 - G1/4" bottom outlet	inox

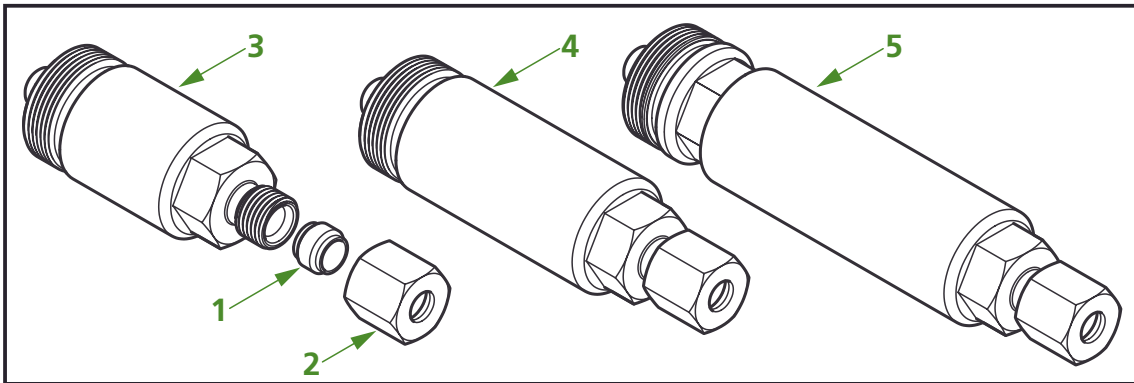
Release date: December 2015

3.6 Metering units for $\varnothing 3/16''$ tubes



Pos	P/n new	P/n old	Description	Material
1	F000585	10801	Cutting ring $\varnothing 3/16''$	brass
2	F000584	10701	Nut $\varnothing 3/16''$	brass
3	F113657	10017	Metering unit no.0 - 0.025cc/M22x1/ $\varnothing 3/16''$	brass
	F113658	10117	Metering unit no.1 - 0.050cc/M22x1/ $\varnothing 3/16''$	brass
	F113659	10217	Metering unit no.2 - 0.100cc/M22x1/ $\varnothing 3/16''$	brass
	F113660	10317	Metering unit no.3 - 0.150cc/M22x1/ $\varnothing 3/16''$	brass
	F113661	10417	Metering unit no.4 - 0.200cc/M22x1/ $\varnothing 3/16''$	brass
	F113662	10517	Metering unit no.8 - 0.400cc/M22x1/ $\varnothing 3/16''$	brass
	F121091	-	Metering unit no.9 - 1.000cc/M22x1/ $\varnothing 3/16''$	brass
4	F121097	-	Metering unit no.10 - 2.000cc/M22x1/ $\varnothing 3/16''$	brass

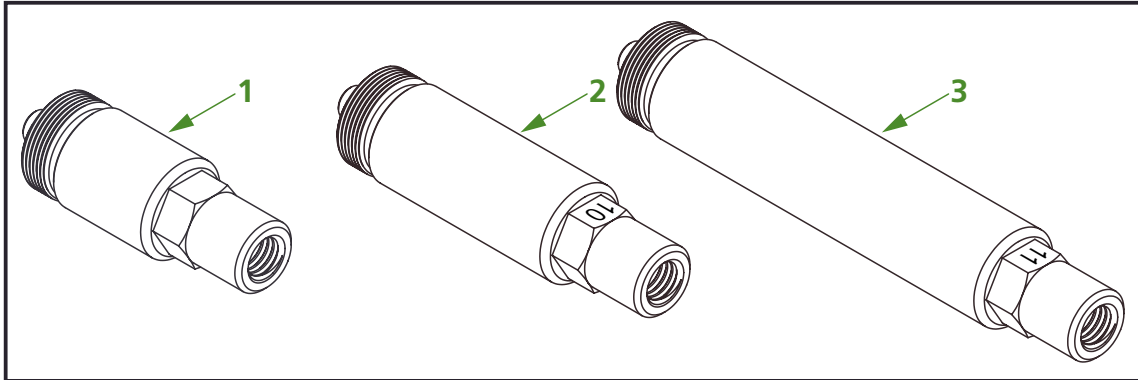
3.7 Metering units for ø6mm tubes



Pos	P/n new	P/n old	Description	Material
1	F000658	09808	Cutting ring ø6mm	brass
	F112544	14617	Cutting ring ø6mm	inox
2	F101063	08908	Nut ø6mm	brass
	F112543	14717	Nut ø6mm	inox
3	F111684	79401	Metering unit no.0 - 0.025cc/M22x1/6mm	brass
	F112522	42322	Metering unit no.0 - 0.025cc/M22x1/6mm	inox
	F110787	70801	Metering unit no.1 - 0.050cc/M22x1/6mm	brass
	F112523	42422	Metering unit no.1 - 0.050cc/M22x1/6mm	inox
	F110788	70901	Metering unit no.2 - 0.100cc/M22x1/6mm	brass
	F112524	42522	Metering unit no.2 - 0.100cc/M22x1/6mm	inox
	F110620	71001	Metering unit no.3 - 0.150cc/M22x1/6mm	brass
	F112525	42622	Metering unit no.3 - 0.150cc/M22x1/6mm	inox
	F110789	71101	Metering unit no.4 - 0.200cc/M22x1/6mm	brass
	F112526	42722	Metering unit no.4 - 0.200cc/M22x1/6mm	inox
	F111680	80401	Metering unit no.5 - 0.250cc/M22x1/6mm	brass
	F110790	72701	Metering unit no.6 - 0.300cc/M22x1/6mm	brass
	F112527	42822	Metering unit no.6 - 0.300cc/M22x1/6mm	inox
	F111681	80501	Metering unit no.7 - 0.350cc/M22x1/6mm	brass
	F110791	71201	Metering unit no.8 - 0.400cc/M22x1/6mm	brass
F112528	42922	Metering unit no.8 - 0.400cc/M22x1/6mm	inox	
F111682	79501	Metering unit no.8.5 - 0.700cc/M22x1/6mm	brass	
F112529	43022	Metering unit no.8.5 - 0.700cc/M22x1/6mm	inox	
F111683	79601	Metering unit no.9 - 1.000cc/M22x1/6mm	brass	
F112530	43122	Metering unit no.9 - 1.000cc/M22x1/6mm	inox	
4	F112657	91001	Metering unit no.10 - 2.000cc/M22x1/6mm	brass
	F115796	19417	Metering unit no.10 - 2.000cc/M22x1/6mm	inox
5	F112658	-	Metering unit no.11 - 4.000cc/M22x1/6mm	brass
	F128423	-	Metering unit no.11 - 4.000cc/M22x1/6mm	inox

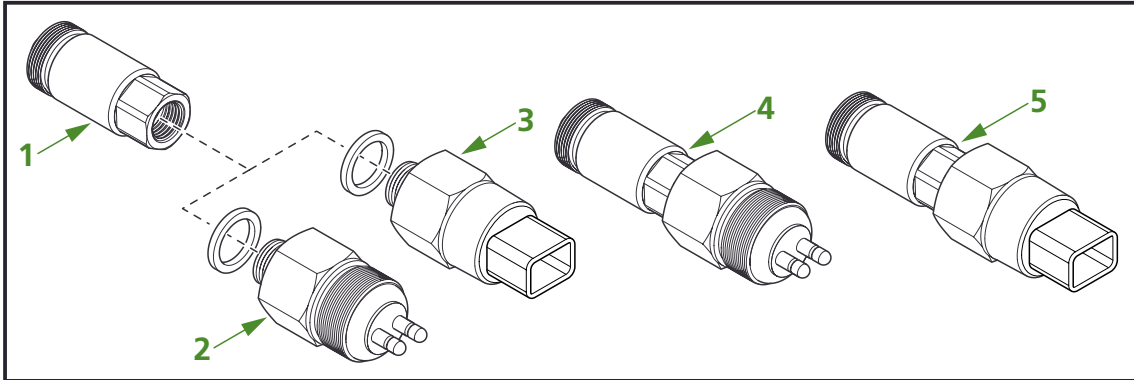
Release date: December 2015

3.8 Metering units for ϕ 1/8"NPT



Pos	P/n new	P/n old	Description	Material
1	F119016	-	Metering unit no.0 - 0.025cc/M22x1/ ϕ 1/8"NPT	brass
	F119018	-	Metering unit no.1 - 0.050cc/M22x1/ ϕ 1/8"NPT	brass
	F119017	-	Metering unit no.2 - 0.100cc/M22x1/ ϕ 1/8"NPT	brass
	F119031	-	Metering unit no.3 - 0.150cc/M22x1/ ϕ 1/8"NPT	brass
	F119019	-	Metering unit no.4 - 0.200cc/M22x1/ ϕ 1/8"NPT	brass
	F195256	-	Metering unit no.5 - 0.250cc/M22x1/ ϕ 1/8"NPT	brass
	F119020	-	Metering unit no.6 - 0.300cc/M22x1/ ϕ 1/8"NPT	brass
	F195257	-	Metering unit no.7 - 0.350cc/M22x1/ ϕ 1/8"NPT	brass
	F119021	-	Metering unit no.8 - 0.400cc/M22x1/ ϕ 1/8"NPT	brass
	F119022	-	Metering unit no.8.5 - 0.700cc/M22x1/ ϕ 1/8"NPT	brass
	F119023	-	Metering unit no.9 - 1.000cc/M22x1/ ϕ 1/8"NPT	brass
2	F119024	-	Metering unit no.10 - 2.000cc/M22x1/ ϕ 1/8"NPT	brass
3	F119835	-	Metering unit no.11 - 4.000cc/M22x1/ ϕ 1/8"NPT	brass
	F128427	-	Metering unit no.11 - 4.000cc/M22x1/ ϕ 1/8"NPT	inox

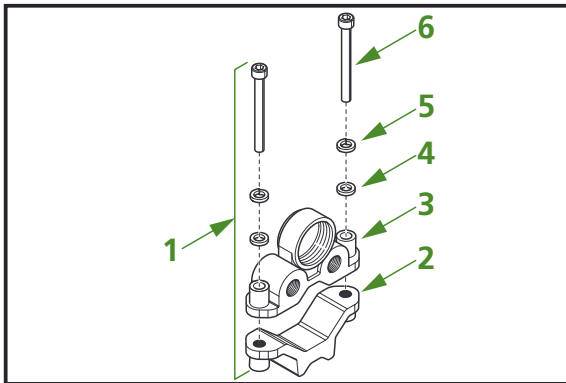
3.9 Pressure switches



Pos	P/n new	P/n old	Description	Material
1	F112491	66601	Pressure switch valve	brass
	F112891	91401	Pressure switch valve	inox
2	F112490	76601	Pressure switch 100 bar	brass
	F112886	91301	Pressure switch 100 bar	inox
	F112493	66401	Pressure switch 125 bar	brass
	F112494	66501	Pressure switch 150 bar	brass
	F113872	13917	Pressure switch 150 bar	inox
	F112495	72801	Pressure switch 175 bar	brass
3	F123548	-	Pressure switch 100 bar / Tyco	brass
	F123613	-	Pressure switch 100 bar / Tyco	inox
	F123549	-	Pressure switch 125 bar / Tyco	brass
	F123614	-	Pressure switch 125 bar / Tyco	inox
	F178825	-	Pressure switch 150 bar / Tyco	brass
	F123615	-	Pressure switch 150 bar / Tyco	inox
	F123550	-	Pressure switch 175 bar / Tyco	brass
	F123616	-	Pressure switch 175 bar / Tyco	inox
4	F111721	73701	Pressure switch 100 bar with valve	brass
	F118880	-	Pressure switch 125 bar with valve	brass
	F115874	-	Pressure switch 150 bar with valve	brass
	F170446	-	Pressure switch 150 bar with valve	inox
5	F125745	-	Pressure switch 100 bar / Tyco with valve	brass
	F124297	-	Pressure switch 125 bar / Tyco with valve	brass
	F124500	-	Pressure switch 150 bar / Tyco with valve	brass
	F125746	-	Pressure switch 175 bar / Tyco with valve	brass

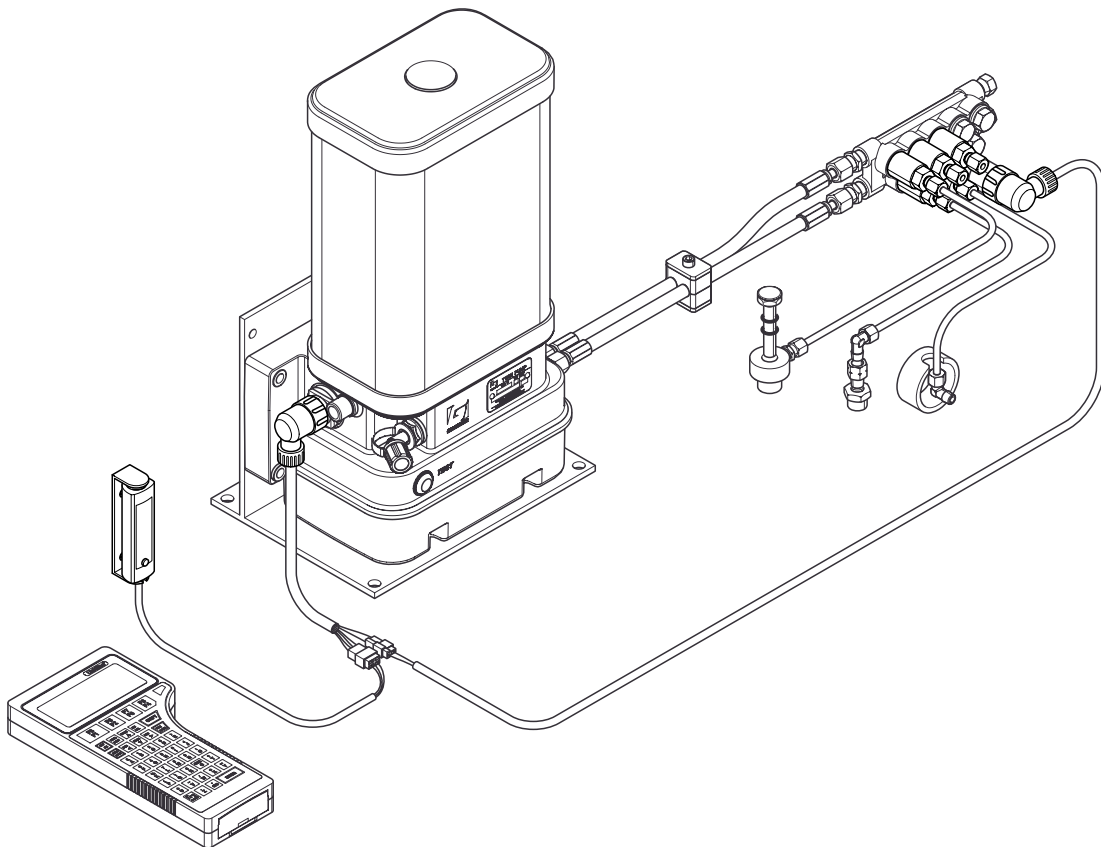
Release date: December 2015

3.10 Pressure switch block



Pos	P/n new	P/n old	Description	Material
1	F125721	-	Pressure switch block kit	-
2	F124424	-	Pressure switch clamping block	brass
3	F124965	-	Pressure switch block	brass
4	F113426	300010	Plain washer M10	steel
5	F113427	330010	Lock washer M10	steel
6	F103255	48801	Allen screw M10x60	steel

4. DIAGNOSTIC TOOLS

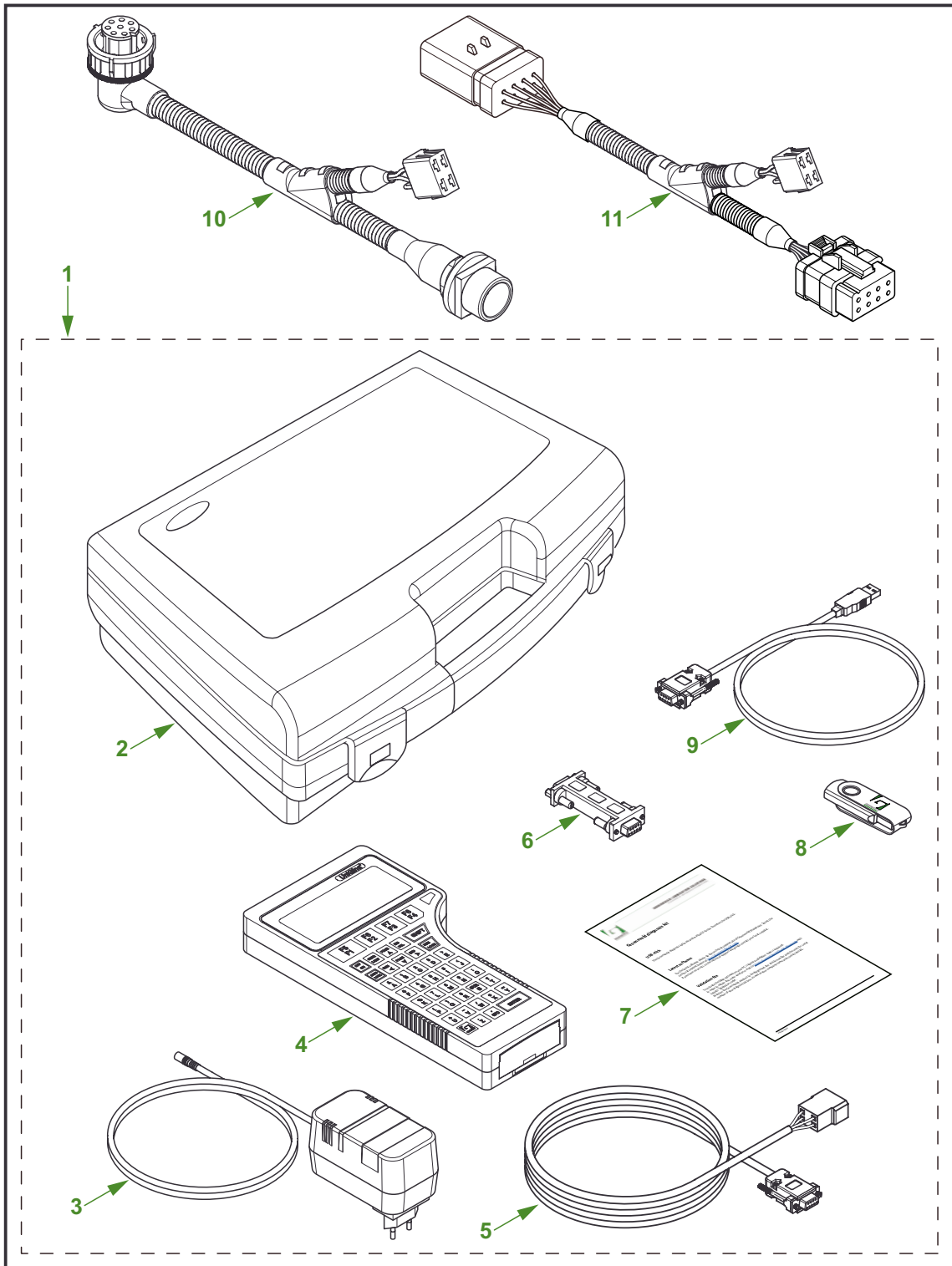


Release date: December 2015



YOUR EFFICIENCY IS OUR CHALLENGE

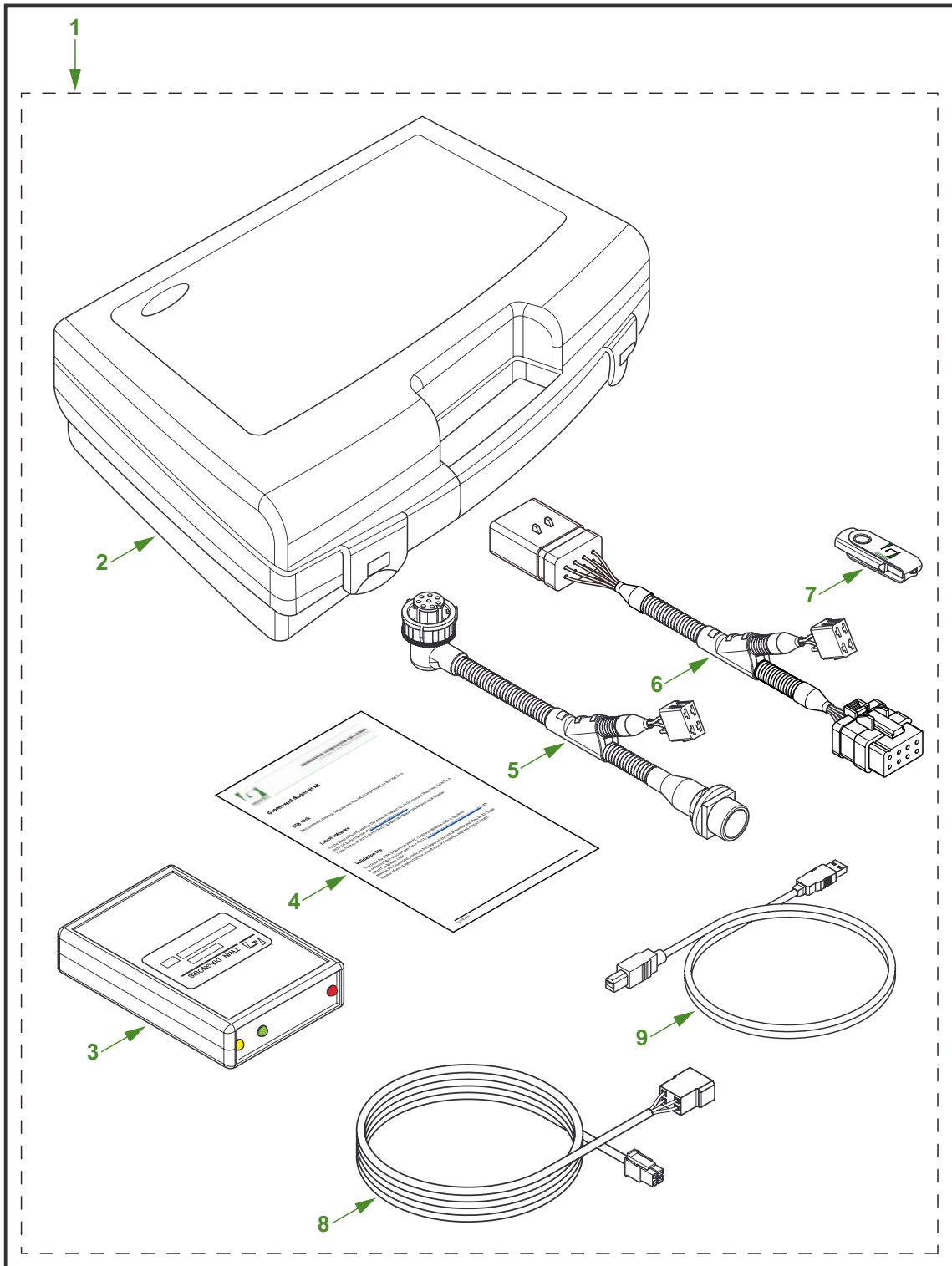
Automatic Twin Greasing System



Release date: December 2015

4.1 UniGINA kit

<i>Pos</i>	<i>Part nr.</i>	<i>Description</i>
1	F121604	UniGINA kit
2	F121605	Diagnosis case
3	F120537/1	Power supply UniGINA
4	F178644	UniGINA
5	F121401	Data cable UniGINA
6	F205694	Converter RS232
7	F603607	Diagnosis kit instruction
8	F603602	USB UniGINA
9	F127437	PC-UniGINA cable
-	F212312	Validation code Twin-2 / Twin-3
10	F111807	Y-cable Twin-2
11	F124310	Y-cable TriPlus-3 / BreakAlube-3 / Twin-3



Release date: December 2015

4.2 Twin PC-GINA kit

<i>Pos</i>	<i>Part nr.</i>	<i>Description</i>
1	F125410	Twin PC-GINA kit
2	F121605	Diagnosis case
3	F124299	Diagnosis interface
4	F603607	Diagnosis kit instruction
5	F111807	Y-cable Twin-2
6	F124310	Y-cable TriPlus-3 / BreakAlube-3 / Twin-3
7	F603606	USB BreakAlube PC-GINA
8	F124311	Data cable PC-GINA
9	F124309	USB cable
	-	Validation code Twin

5. INDEX

F000584.....	38	F111683.....	39
F000585.....	38	F111684.....	39
F000658.....	39	F111697.....	33
F000686.....	19	F111699.....	33
F101063.....	39	F111721.....	41
F101156.....	29	F111741.....	33
F103049.....	9, 25	F111742.....	33
F103255.....	42	F111753.....	7, 9, 23, 25
F104436.....	19	F111807.....	45, 47
F104635.....	29	F111842.....	23
F105891.....	29	F111856.....	7, 23
F106633.....	29	F111952.....	35
F107458.....	36	F111953.....	35
F107459.....	36	F111956.....	23
F107460.....	36	F112004.....	35
F107461.....	36	F112005.....	35
F107462.....	36	F112126.....	23
F107463.....	36	F112410.....	7, 23
F107464.....	36	F112477.....	35
F107465.....	36	F112487.....	10
F107466.....	36	F112488.....	29
F107894.....	29	F112490.....	41
F107895.....	29	F112491.....	41
F107897.....	29	F112493.....	41
F107898.....	29	F112494.....	41
F107901.....	29	F112495.....	41
F108244.....	36	F112522.....	39
F109506.....	29	F112523.....	39
F110151.....	9, 25	F112524.....	39
F110620.....	39	F112525.....	39
F110628.....	35	F112526.....	39
F110629.....	35	F112527.....	39
F110630.....	35	F112528.....	39
F110631.....	35	F112529.....	39
F110787.....	39	F112530.....	39
F110788.....	39	F112531.....	33
F110789.....	39	F112532.....	33
F110790.....	39	F112533.....	33
F110791.....	39	F112534.....	33
F110890.....	29	F112535.....	33
F111296.....	7, 9, 23, 25	F112536.....	33
F111393.....	35	F112537.....	33
F111394.....	35	F112538.....	33
F111395.....	35	F112539.....	23, 25
F111396.....	35	F112543.....	39
F111410.....	25	F112544.....	39
F111612.....	37	F112589.....	23
F111636.....	33	F112648.....	37
F111638.....	33	F112657.....	39
F111639.....	33	F112658.....	39
F111640.....	33	F112769.....	29
F111642.....	33	F112842.....	29
F111647.....	37	F112855.....	33
F111680.....	39	F112861.....	7, 23
F111681.....	39	F112862.....	7, 23
F111682.....	39	F112863.....	7, 9, 23, 25

F112864.....	7, 9, 23, 25	F119020.....	40
F112867.....	23	F119021.....	40
F112868.....	7, 9, 23, 25	F119022.....	40
F112875.....	35	F119023.....	40
F112886.....	41	F119024.....	40
F112891.....	41	F119031.....	40
F112915.....	7, 23	F119100.....	19
F113014.....	29	F119115.....	19
F113015.....	29	F119125.....	15
F113224.....	7, 23	F119425.....	17
F113426.....	42	F119494.....	15, 17
F113427.....	42	F119577.....	19
F113547.....	19	F119581.....	21
F113589.....	29	F119586.....	17
F113590.....	29	F119587.....	17
F113615.....	33	F119588.....	17
F113616.....	33	F119592.....	17
F113657.....	38	F119593.....	17
F113658.....	38	F119637.....	19
F113659.....	38	F119638.....	21
F113660.....	38	F119639.....	21
F113661.....	38	F119656.....	15
F113662.....	38	F119835.....	40
F113872.....	41	F119888.....	17
F113966.....	29	F119890.....	17
F113967.....	29	F119891.....	17
F114161.....	10	F120306.....	29
F114230.....	13, 15, 17	F120320.....	15
F114923.....	13	F120537/1.....	45
F114924.....	7, 9, 23, 25	F120538.....	17
F115173.....	35	F120600.....	21
F115174.....	35	F120601.....	21
F115201.....	37	F120619.....	15
F115202.....	37	F120836.....	19
F115460.....	37	F120941.....	9, 25
F115745.....	7, 23	F121091.....	38
F115796.....	39	F121097.....	38
F115874.....	41	F121160.....	7, 23
F116003.....	25	F121173.....	7, 23
F116127.....	29	F121174.....	9, 25
F116180.....	35	F121391.....	15, 17
F116245.....	35	F121401.....	45
F116540.....	25	F121604.....	45
F116763.....	25	F121605.....	45, 47
F116961.....	9, 10, 25	F122809.....	29
F117029.....	9, 25	F122923.....	36
F117030.....	9, 25	F122991.....	29
F117037.....	9, 25	F123548.....	41
F117253.....	7, 9, 23, 25	F123549.....	41
F117930.....	17	F123550.....	41
F118170.....	7, 9, 23, 25	F123571.....	21
F118378.....	15, 17	F123613.....	41
F118880.....	41	F123614.....	41
F118904.....	21	F123615.....	41
F119016.....	40	F123616.....	41
F119017.....	40	F123724.....	21, 29
F119018.....	40	F123725.....	29
F119019.....	40	F123726.....	29

Release date: December 2015

Automatic Twin Greasing System

F123727.....	29	F129897.....	11
F123728.....	29	F129898.....	11
F124062.....	21	F129909.....	11, 23, 25
F124297.....	41	F129910.....	11
F124298.....	13	F131468.....	7, 9
F124299.....	47	F131503.....	7, 9
F124309.....	47	F170210.....	7, 9, 23, 25
F124310.....	45, 47	F170372.....	29
F124311.....	47	F170443.....	35
F124424.....	42	F170446.....	41
F124500.....	41	F172535.....	9, 25
F124630.....	7	F174171.....	29
F124631.....	7	F177843.....	15, 17
F124634.....	7	F178596.....	21
F124635.....	9	F178597.....	19
F124636.....	7	F178644.....	45
F124637.....	9	F178796.....	19
F124662.....	7	F178825.....	41
F124663.....	7	F179811.....	15, 17
F124669.....	7	F195256.....	40
F124671.....	9	F195257.....	40
F124965.....	42	F202360.....	15, 17
F125410.....	47	F202361.....	15, 17
F125438.....	7	F204524.....	29
F125721.....	42	F205694.....	45
F125745.....	41	F205696.....	29
F125746.....	41	F208296.....	36
F126122.....	7, 9	F208297.....	36
F126201.....	23, 25	F208298.....	36
F126268.....	23, 25	F209275.....	37
F126308.....	7, 9	F209276.....	37
F126376.....	7, 9, 11, 13, 19	F209905.....	37
F126439.....	13, 15	F210491.....	13
F126630.....	13	F210492.....	13
F126634.....	13	F210493.....	13
F126635.....	13	F210494.....	13
F126642.....	13	F210554.....	19
F126649.....	13	F211377.....	33
F126688.....	13	F212312.....	45
F126703.....	19	F601782.....	10
F126704.....	19	F601785.....	7, 9
F126795.....	19	F601786.....	7, 9
F127086.....	13	F603602.....	45
F127170.....	21	F603606.....	47
F127230.....	7, 23	F603607.....	45, 47
F127305.....	29	F604159.....	10
F127306.....	29		
F127431.....	21		
F127437.....	45		
F127441.....	25		
F127883.....	33		
F127884.....	33		
F127885.....	33		
F127886.....	33		
F128423.....	39		
F128427.....	40		
F128873.....	13		
F129027.....	15		

Release date: December 2015



www.groeneveld-group.com